



**PINNACLE  
REALTY**  
OF NEW YORK, LLC

EXCLUSIVE LISTING

**FOR LEASE**



**711 EAST 241ST STREET**

**BRONX, NY 10470**

# Land Lease Prime Corner off White Plains Rd

Built to Suit

Type

**Warehouse / Retail / Industrial**



SQUARE FOOT

**2,300<sub>RSF</sub>**



F.A.R.

**1.25**  
(2,875 BSF)



ZONING

**R5**



PARCEL ID

**5111**  
BLOCK



**24**  
LOT

**PRICE**

**Upon Request**

**718-784-8282 / PINNACLERENY.COM**

All information is from sources deemed reliable and is submitted subject to errors, omission, changes of price or other conditions, prior sale, rent and withdrawal without notice.



# Property Overview

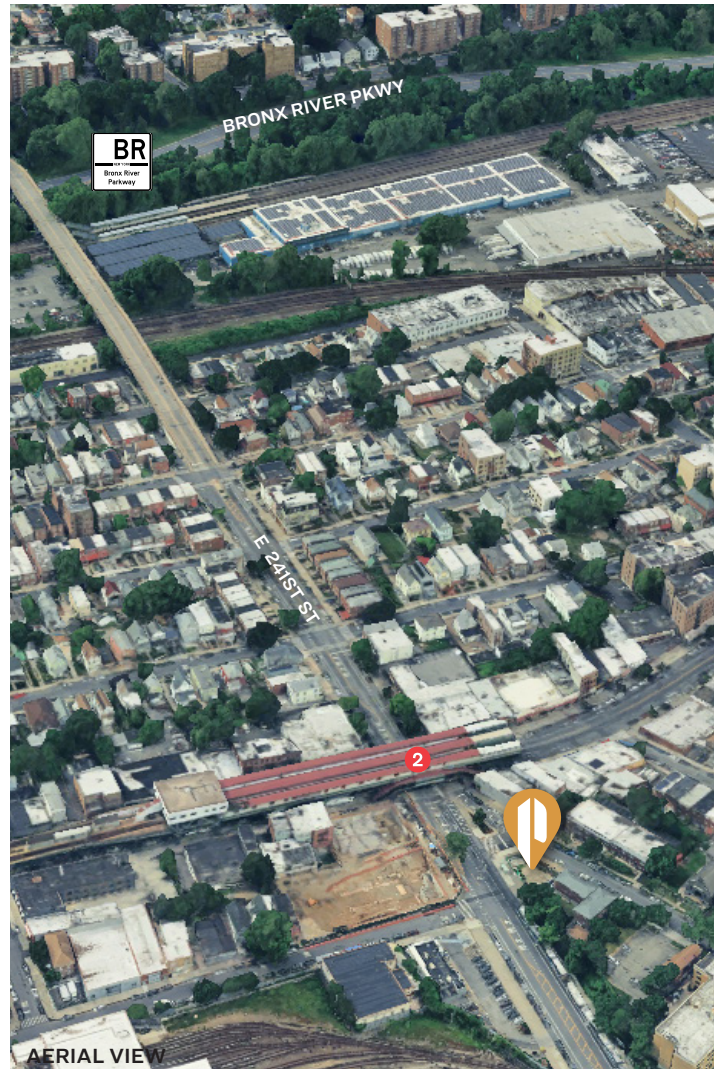
Pinnacle Realty of New York, LLC is pleased to present the exclusive offering for the ground lease of 711 East 241st Street, Bronx, NY—a rare opportunity in a high-demand area. This 2,300-square-foot lot is now available with ground lease options and built-to-suit flexibility, making it ideal for tenants or developers seeking a customizable space. Located in a well-connected Bronx neighborhood, the site offers excellent accessibility to public transit, major roadways, and local amenities. Whether you're envisioning retail, office, or mixed-use development, this property provides a strategic foundation for long-term growth and value. Don't miss this versatile offering in a rapidly evolving market.

## Features

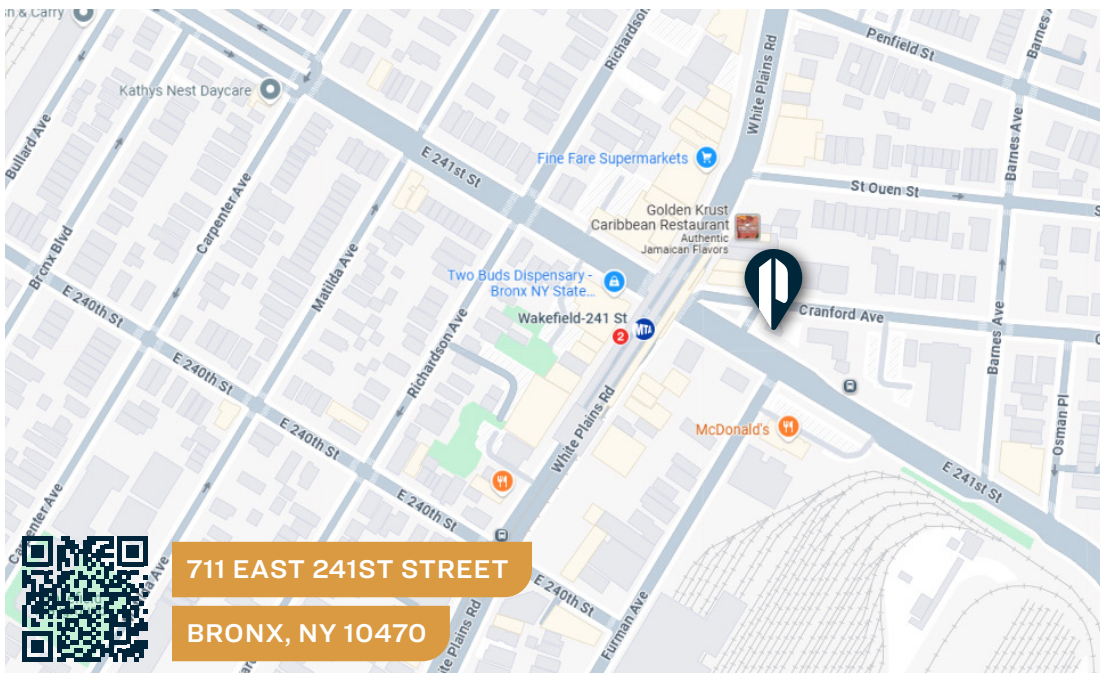
- **Lot Dimensions:** 80' x 50'
- 80' Frontage on 241st Street
- **Residential FAR:** 1.25 (2,875 BSF)

## Ideal For

- Drive-Through Food Establishment
- Retail/Service Center
- Parking
- EV Charging Center and More!



AERIAL VIEW



711 EAST 241ST STREET

BRONX, NY 10470

## TRANSPORTATION

2

WAKEFIELD/  
241 ST



BRONX RIVER  
PKWY

CROSS COUNTY  
PKWY

NEW ENGLAND  
THRUWAY



BX39, BXM11:  
WHITE PLAINS  
RD / E 241ST AVE

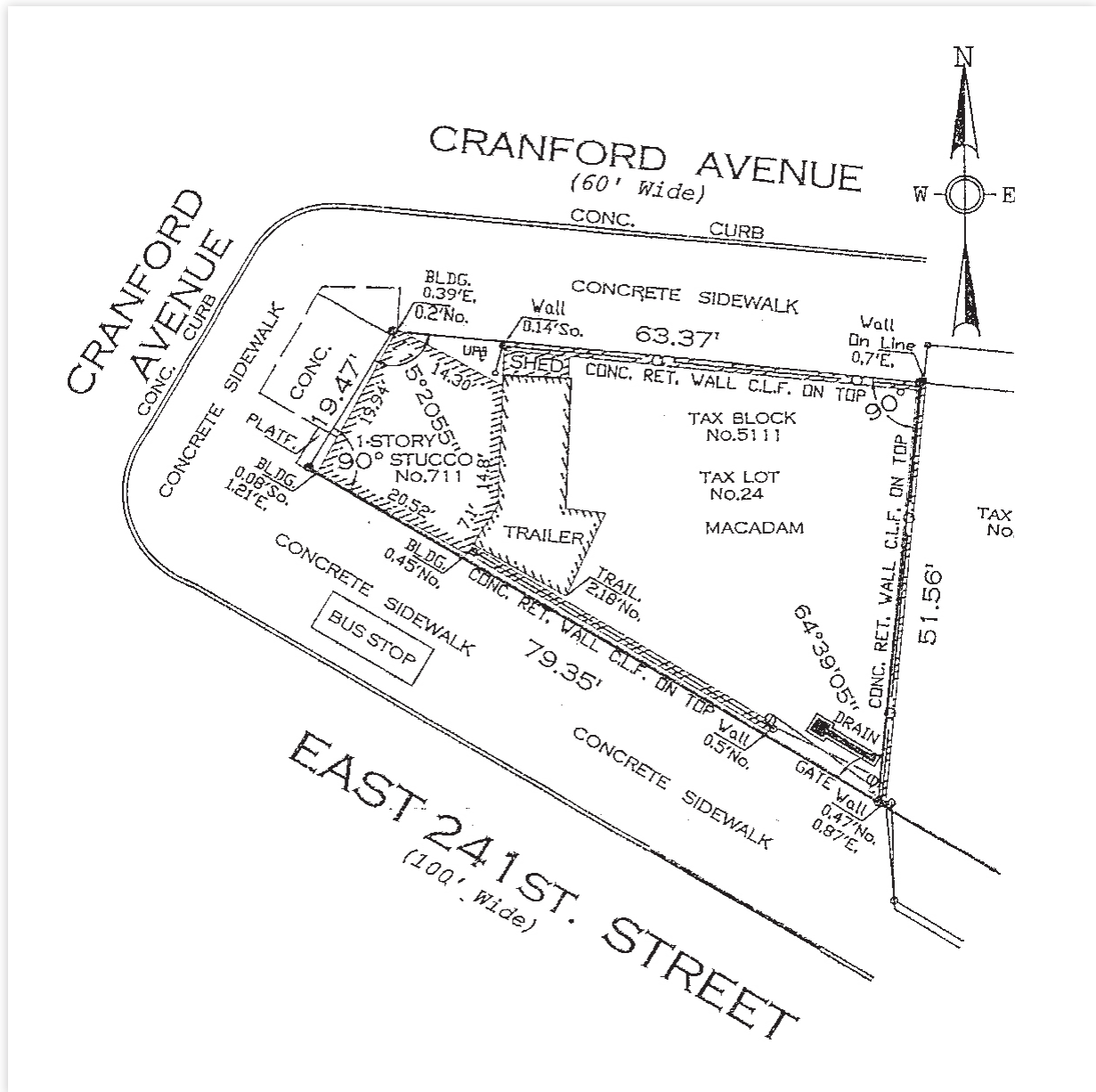


40, 41, 42, 43:  
WHITE PLAINS  
RD / E 241 ST



718-784-8282 / PINNACLERENY.COM

All information is from sources deemed reliable and is submitted subject to errors, omission, changes of price or other conditions, prior sale, rent and withdrawal without notice.



**PINNACLE  
REALTY**  
OF NEW YORK, LLC

34-07 Steinway Street, Suite 202  
Long Island City, NY 11101  
718-784-8282  
[pinnaclereny.com](http://pinnaclereny.com)

FOR MORE INFORMATION ABOUT THIS  
PROPERTY CONTACT EXCLUSIVE AGENTS:



**ARIEL CASTELLANOS**

Associate Broker  
[acastellanos@pinnaclereny.com](mailto:acastellanos@pinnaclereny.com)  
718-371-6412



**FEDERICO MAZZEO**

Salesperson  
[fmazzeo@pinnaclereny.com](mailto:fmazzeo@pinnaclereny.com)  
718-371-6424