



39-15 29TH STREET

LONG ISLAND CITY, NY 11101

Recently Renovated Office at Queens Plaza

1,700 Sq. Ft. - Short Walk to
Multiple Subways

Type
Office



SQUARE FOOT

1,700 RSF



ZONING

M1-2

PARCEL ID



399

BLOCK



13

LOT

PRICE

Upon Request

718-784-8282 / PINNACLERENY.COM

All information is from sources deemed reliable and is submitted subject to errors, omission, changes of price or other conditions, prior sale, rent and withdrawal without notice.

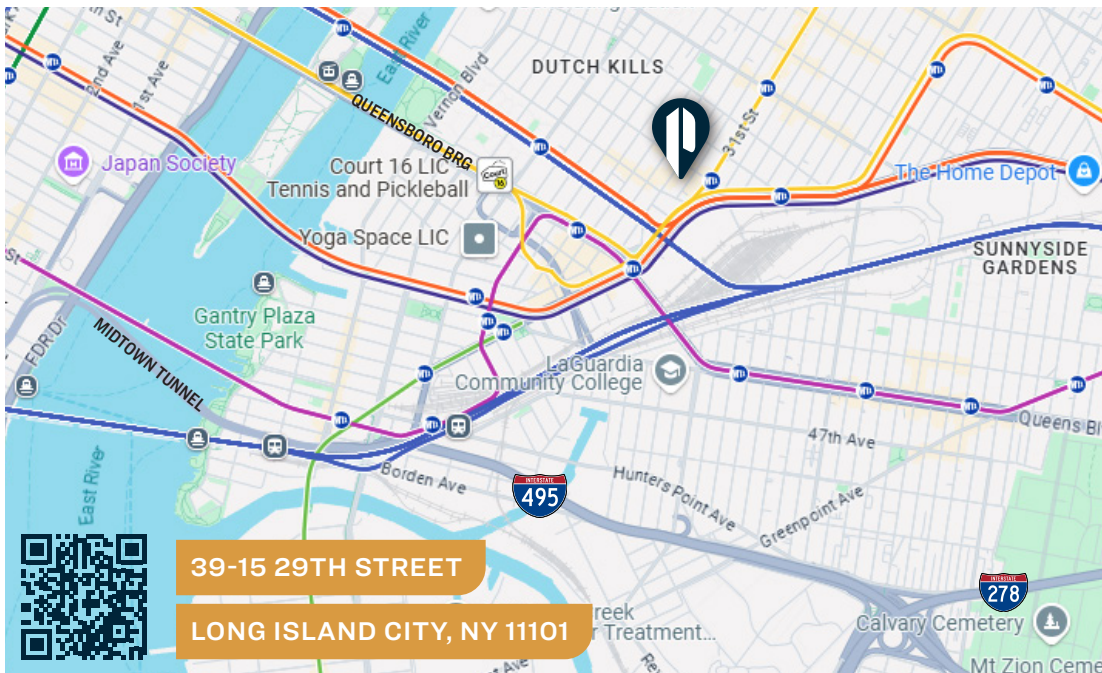
Property Overview

Features

- 1,700 Sq. Ft. 2nd Floor Office
- Fully Air Conditioned
- Recently Renovated
- 5 Private Offices
- Kitchenette
- Great Natural Light



INTERIOR



39-15 29TH STREET

LONG ISLAND CITY, NY 11101

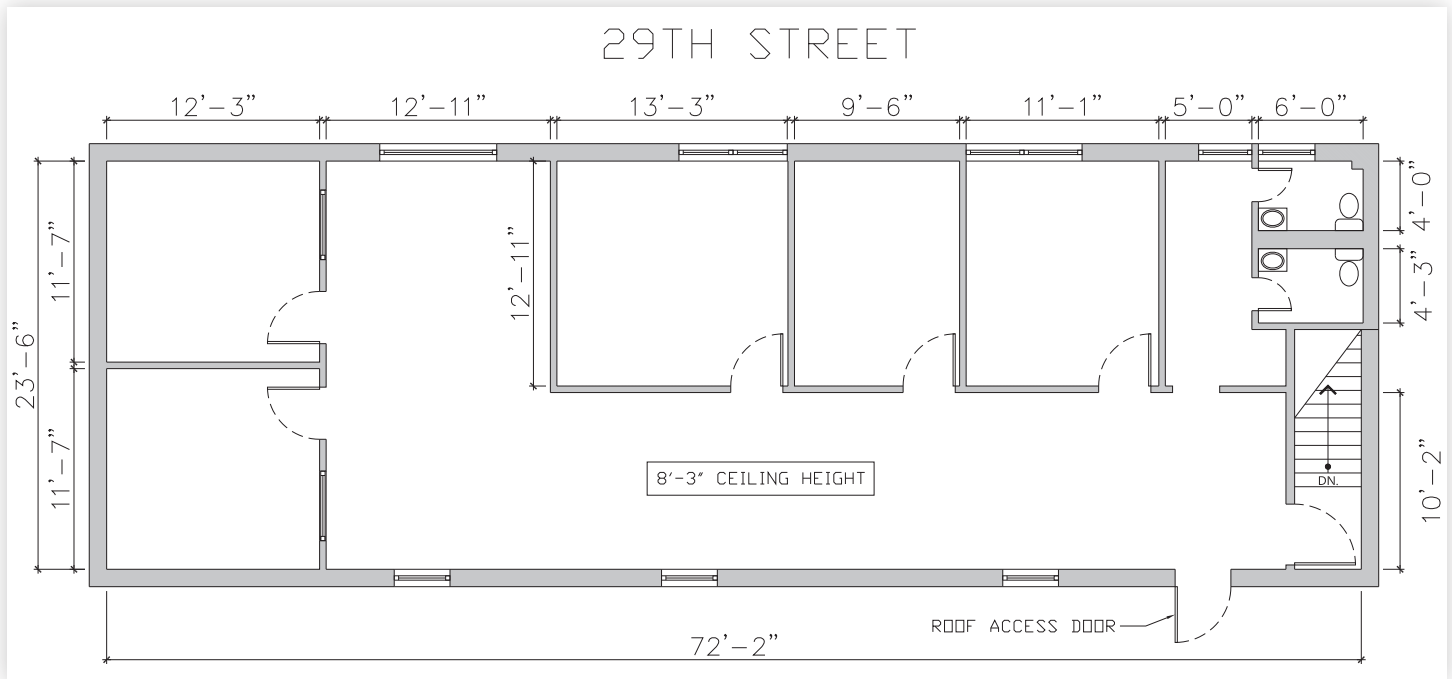
TRANSPORTATION

- 7** 33RD ST/ RAWSON ST
- E M** QUEENS PLAZA
- R**

- MIDTOWN TUNNEL**
- LONG ISLAND EXPRESSWAY**
- BQE**

- MTA Bus** LIRR: LIC
- Q32, Q60:** QUEENS BLVD/ 35 ST

FLOOR PLAN



**PINNACLE
REALTY**
OF NEW YORK, LLC

34-07 Steinway Street, Suite 202
Long Island City, NY 11101
718-784-8282
pinnaclereny.com

FOR MORE INFORMATION ABOUT THIS PROPERTY CONTACT EXCLUSIVE AGENTS:



BRENDAN BURKE
Associate Broker
bburke@pinnaclereny.com
718-371-6403



JAMES EGE
Salesperson
jege@pinnaclereny.com
718-371-6423



PAUL BRALOWER
Associate Broker
pbralower@pinnaclereny.com
718-371-6402