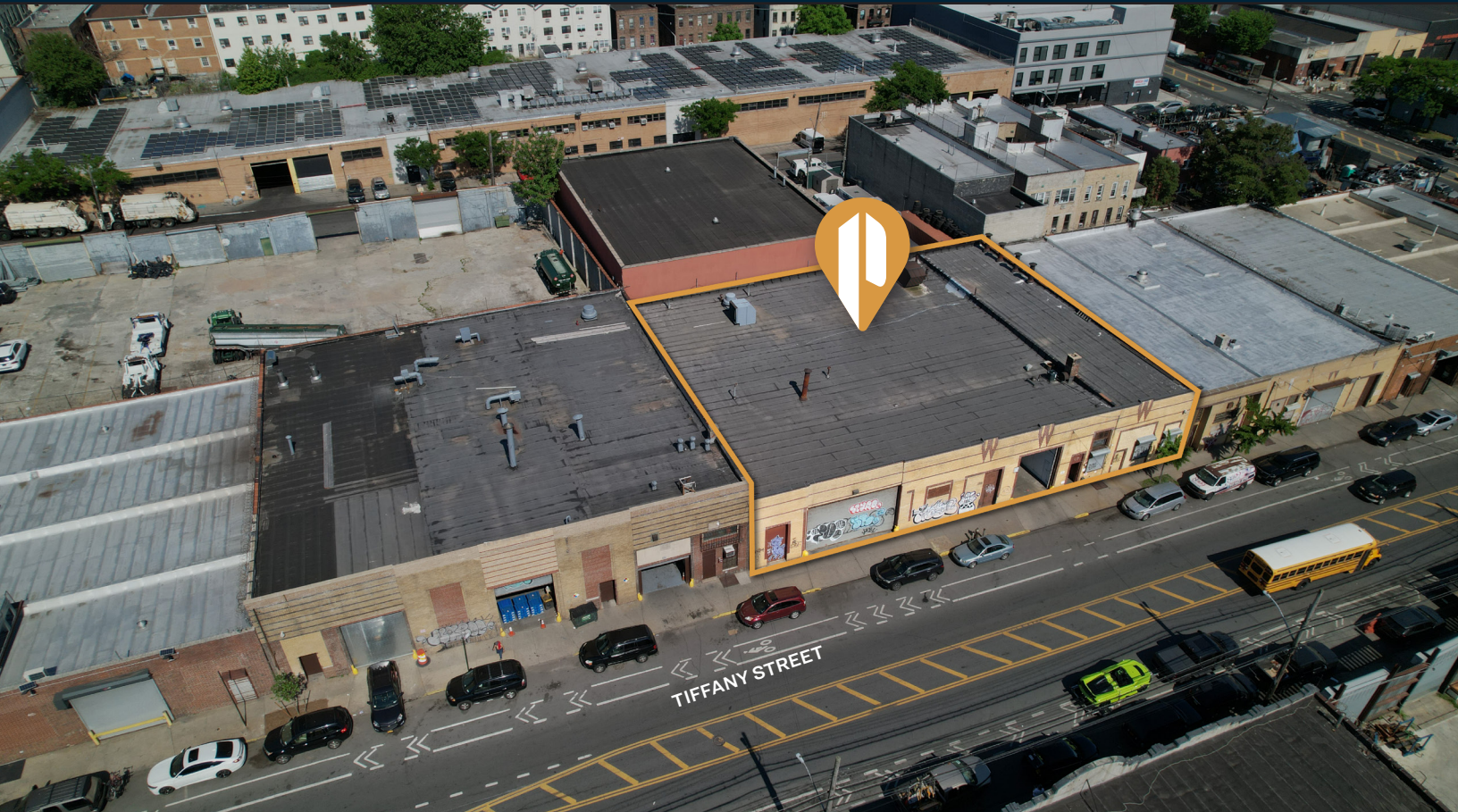




**PINNACLE
REALTY**
OF NEW YORK, LLC

EXCLUSIVE LISTING

FOR SALE



620 TIFFANY STREET

BRONX, NY 10474

12,500 Sq. Ft. Warehouse For Sale

Located at the Entrance of
Hunts Point on a Double Wide Street.
Walking Distance to the **6** Subway.

Type

Warehouse / Industrial



SQUARE FOOT

12,500_{SF}



CLEAR HEIGHT

17'



LOADING

3 DRIVE-IN DOORS



ANNUAL R.E. TAXES

\$43,228



ZONING

M1-2



PARCEL ID

2765

BLOCK



118

LOT

PRICE

Upon Request

718-784-8282 / PINNACLERENY.COM

All information is from sources deemed reliable and is submitted subject to errors, omission, changes of price or other conditions, prior sale, rent and withdrawal without notice.

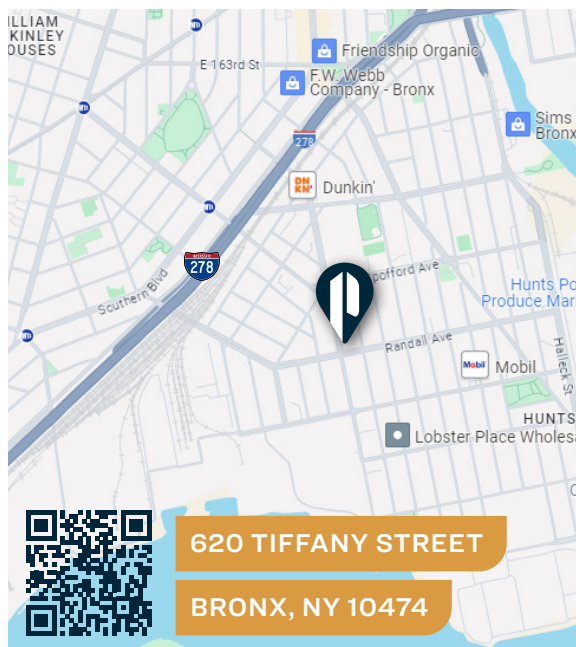
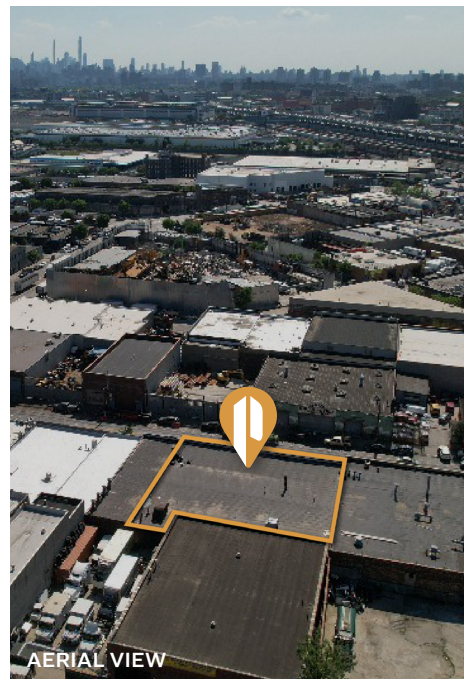
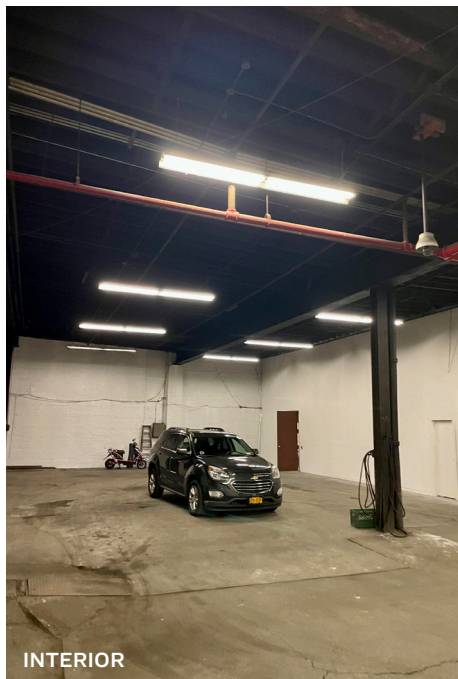
Property Overview

Features

- **Building Size:** 125'x100'
- **Ceiling Height:** 17'
- 500 Sq. Ft. Offices
- 3 Drive-In Doors
- Sprinkler System Throughout
- Gas Radiant Heat

Ideal For

- Storage & Distribution
- Manufacturing Uses
- Showroom & More



TRANSPORTATION

6

LONGWOOD AVENUE



BRUCKNER BOULEVARD

BRUCKNER EXPY

RFK - TRIBORO BRIDGE

MINUTES TO MANHATTAN



BX46: TIFFANY STREET/ RANDALL AVENUE



34-07 Steinway Street, Suite 202
Long Island City, NY 11101
718-784-8282
pinnaclereny.com

FOR MORE INFORMATION ABOUT THIS
PROPERTY CONTACT EXCLUSIVE AGENTS:



ARIEL CASTELLANOS

Associate Broker
acastellanos@pinnaclereny.com
718-371-6412



FEDERICO MAZZEO

Salesperson
fmazzeo@pinnaclereny.com
718-371-6424