



**PINNACLE  
REALTY**  
OF NEW YORK, LLC

EXCLUSIVE LISTING

**FOR LEASE**



**33-47 55TH STREET**

**WOODSIDE, NY 11377**

# Perfect Contractor's Set-up in Woodside

Right Down Broadway at  
Subways and BQE

Type

**Warehouse / Industrial**



SQUARE FOOT

**3,460<sub>RSF</sub>**



ZONING

**M1-1**



CLEAR HEIGHT

**14'**



PARCEL ID

**1194**

BLOCK



LOADING

**1 DRIVE-IN**



**32**

LOT

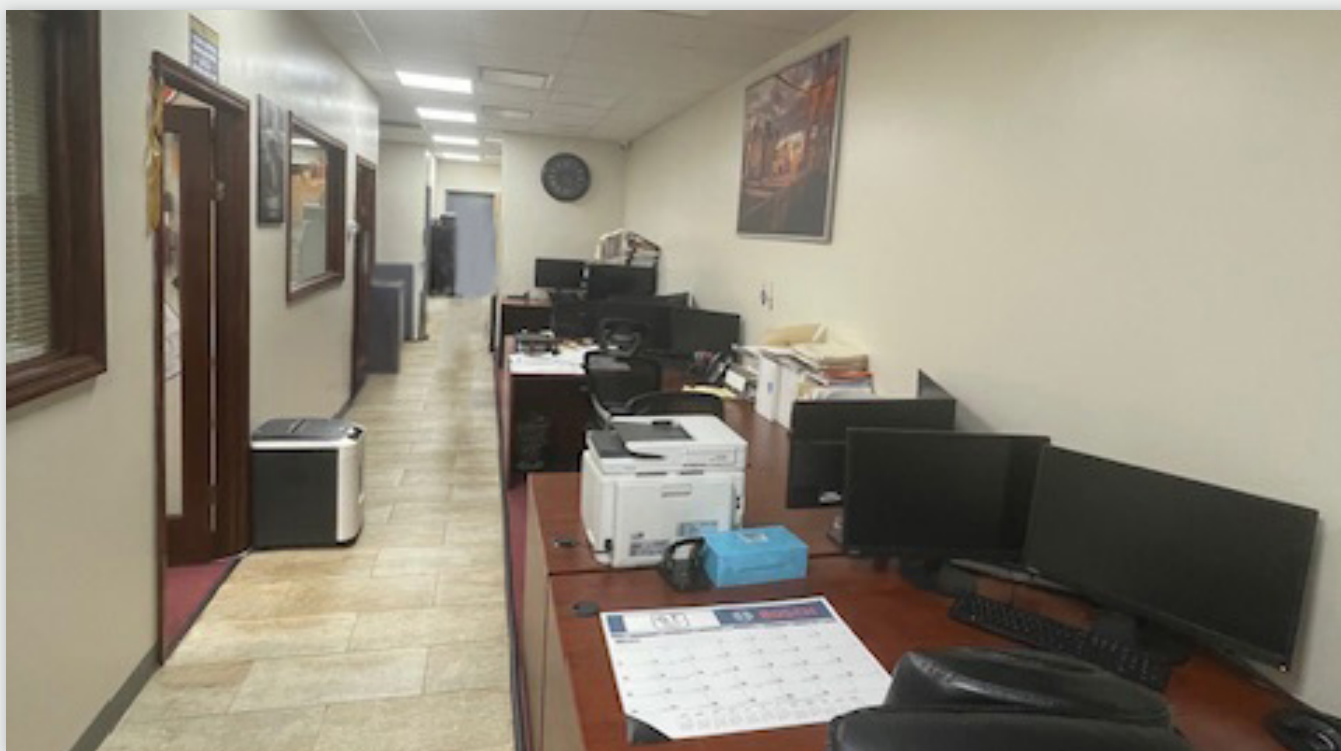
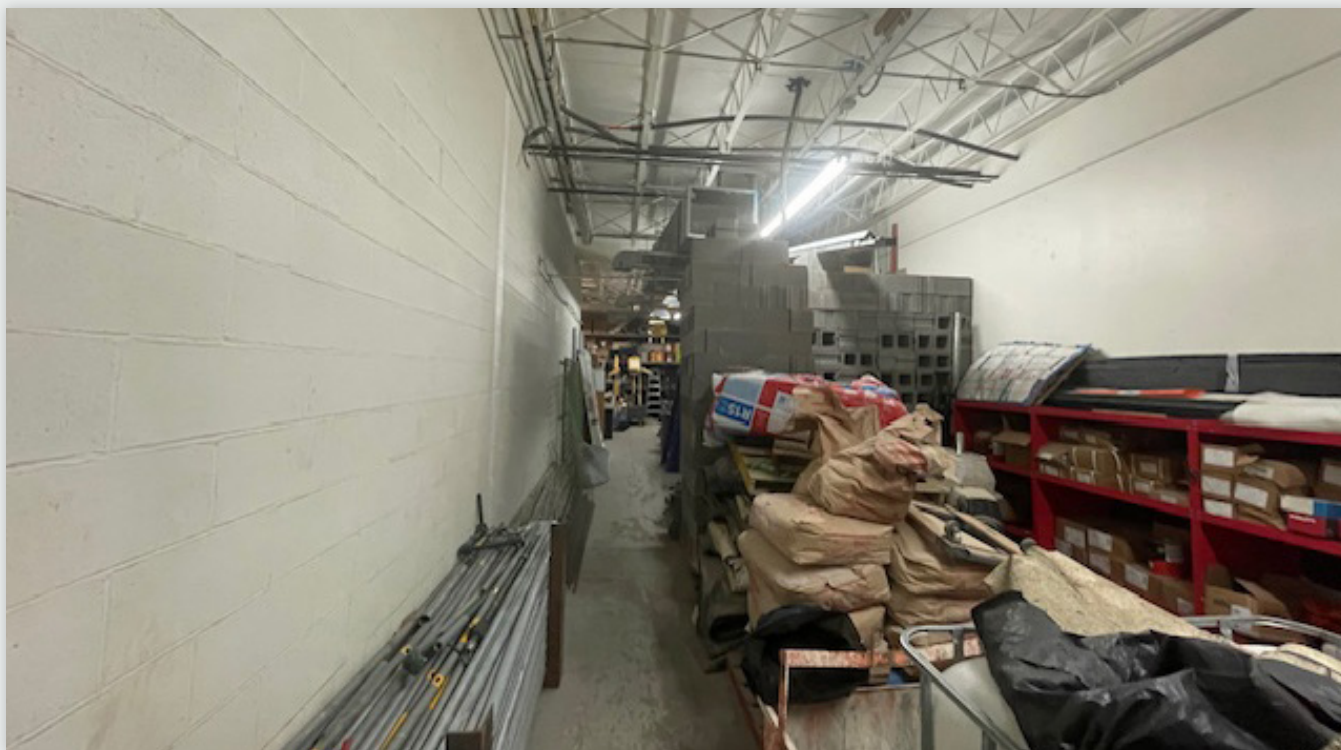
PRICE

**Upon Request**

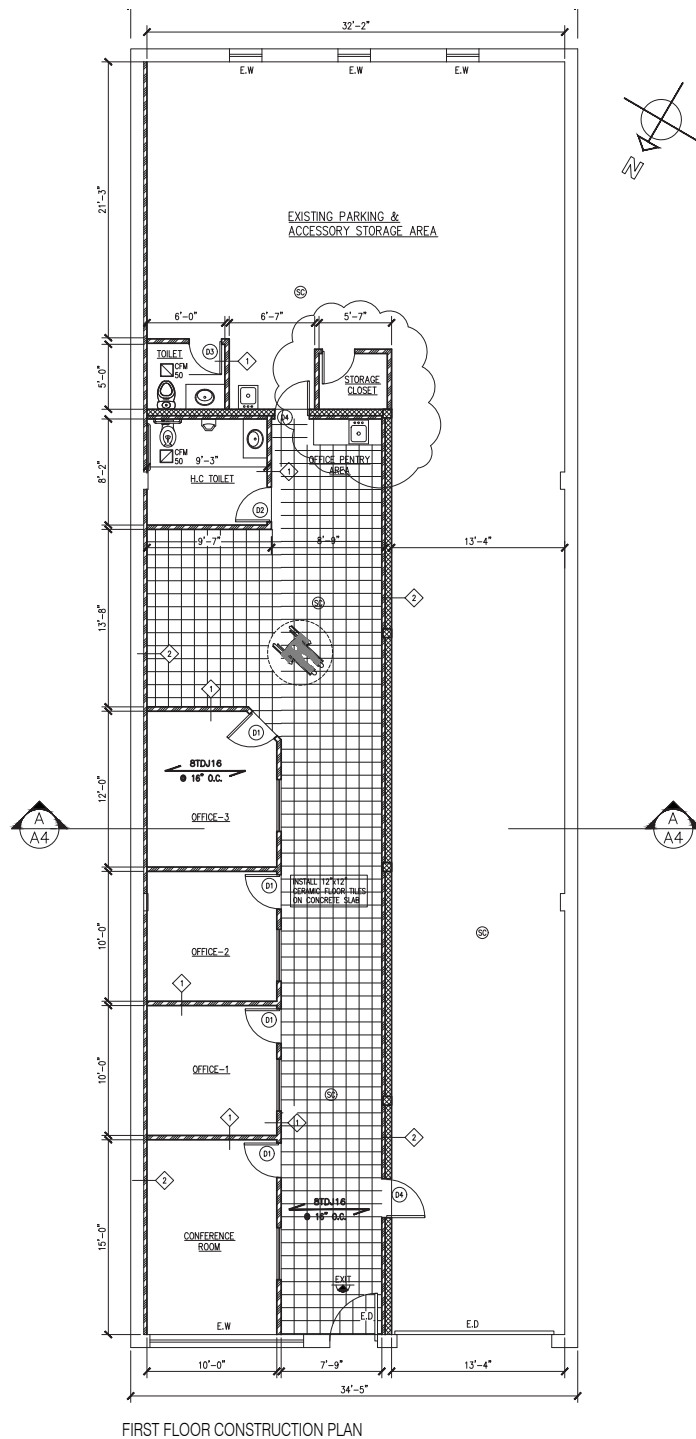
**718-784-8282 / PINNACLERENY.COM**

All information is from sources deemed reliable and is submitted subject to errors, omission, changes of price or other conditions, prior sale, rent and withdrawal without notice.

## PICTURES



# FLOORPLAN





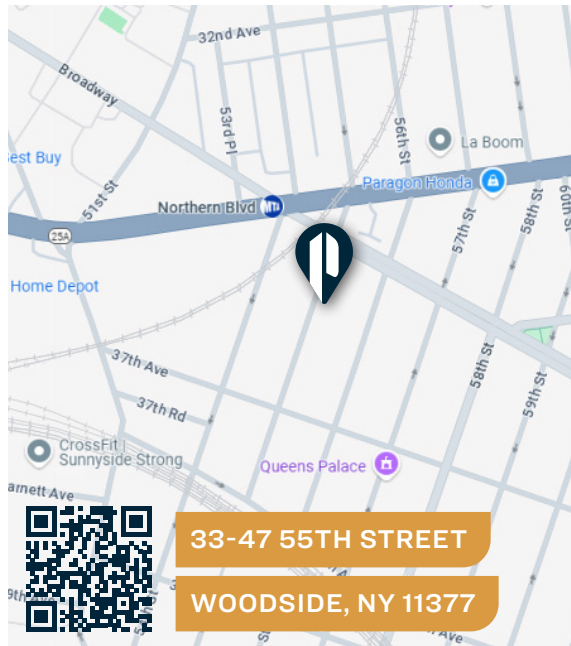
# Property Overview

## Features

- 3,460 Sq. Ft.
- HVAC Throughout
- 1,350 Sq. Ft. Offices
- Conference Room
- Drive-In




AERIAL VIEW




33-47 55TH STREET  
WOODSIDE, NY 11377

## TRANSPORTATION

**E F** NORTHERN BLVD/  
**M R** BROADWAY

 QUEENS BLVD  
NORTHERN BLVD  
GRAND CENTRAL PKWY  
BQE

 **MTA Bus** Q18: BROADWAY/  
56 STREET  
Q66: NORTHERN BLVD/54 ST



34-07 Steinway Street, Suite 202  
Long Island City, NY 11101  
718-784-8282  
[pinnacclereny.com](http://pinnacclereny.com)

FOR MORE INFORMATION ABOUT THIS  
PROPERTY CONTACT EXCLUSIVE AGENTS:



**JAMES EGE**  
Salesperson  
[jege@pinnacclereny.com](mailto:jege@pinnacclereny.com)  
718-371-6423



**TYLER FIELDS**  
Salesperson  
[tfields@pinnacclereny.com](mailto:tfields@pinnacclereny.com)  
718-371-6375