



**PINNACLE
REALTY**
OF NEW YORK, LLC

EXCLUSIVE LISTING

FOR LEASE




37-80 REVIEW AVENUE

LONG ISLAND CITY, NY 11101

Prime Paved and Fenced Industrial Lot in LIC

35,000 - 65,000 Sq. Ft. Divisions


Type
Land

SQUARE FOOT
 **35,000 -
65,000_{RSF}**

 **Divisions
Considered**

 **Minutes to
Manhattan**

ZONING
 **M3-1**

PARCEL ID
 **312
BLOCK**

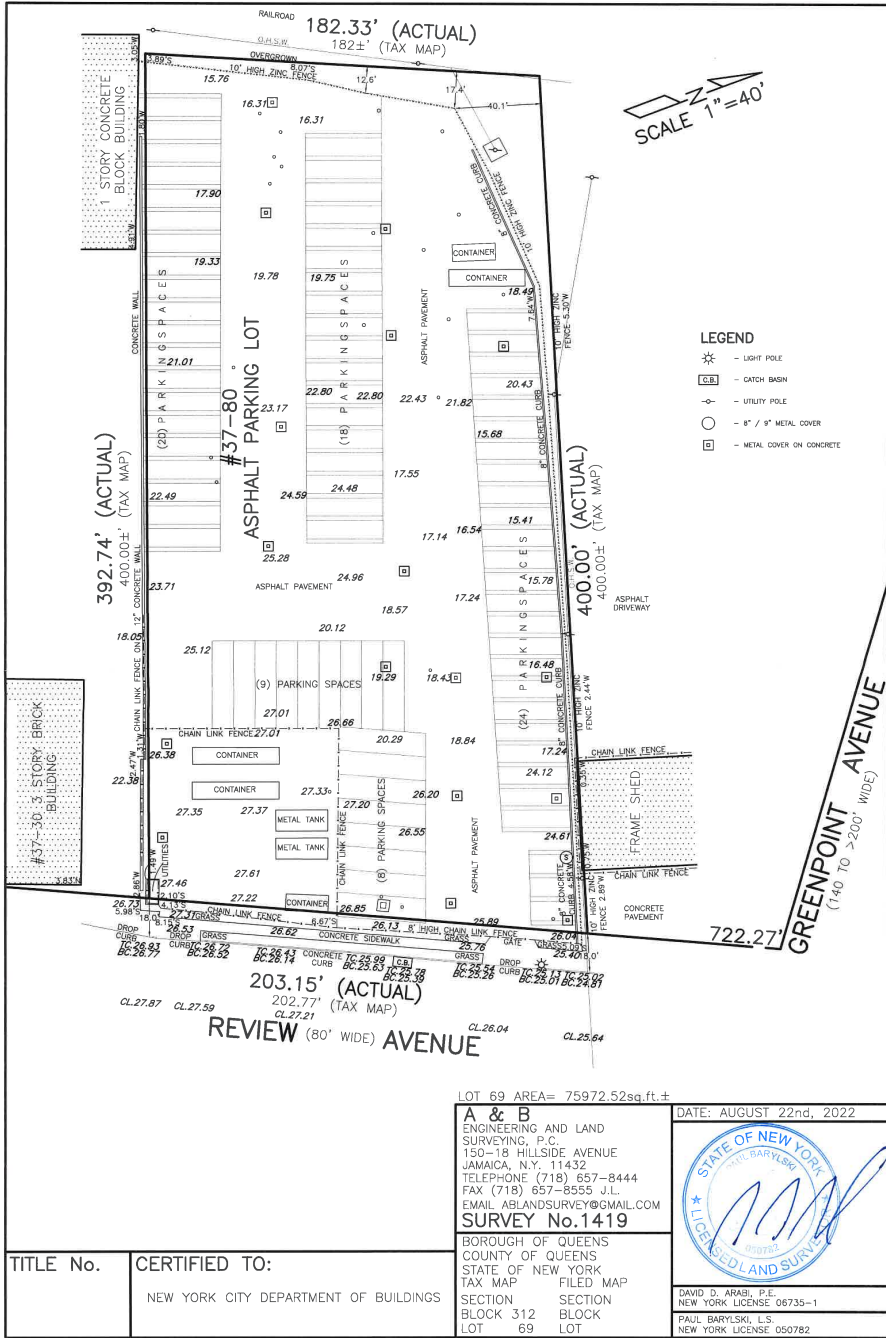
 **69
LOT**

PRICE

Upon Request

718-784-8282 / PINNACLERENY.COM

All information is from sources deemed reliable and is submitted subject to errors, omission, changes of price or other conditions, prior sale, rent and withdrawal without notice.



Property Overview

Features

- Lot Size: 200' x 400'
- Approx. 65,000 Sq. Ft. Lot
- Fully Paved and Fenced
- M3-1 Zone
- 200' Frontage
- Located on Wide Street
- Electric Service Available
- Minutes to Manhattan
- 35,000 - 65,000 Sq. Ft. Divisions Available

Ideal For

- Fleet Parking, Material Storage & More!



TRANSPORTATION

- 7** 33RD STREET/RAWSON STREET
- G** GREENPOINT AVENUE
- MIDTOWN TUNNEL
- LONG ISLAND EXPRESSWAY
- BQE
- MTA Bus** B24: GREENPOINT AVE/REVIEW AVE



34-07 Steinway Street, Suite 202
Long Island City, NY 11101
718-784-8282
pinnaclereny.com

FOR MORE INFORMATION ABOUT THIS PROPERTY CONTACT EXCLUSIVE AGENTS:



BRENDAN BURKE
Associate Broker
bburke@pinnaclereny.com
718-371-6403



GEORGE MARGARONIS
Partner
gmargaronis@pinnaclereny.com
718-784-8404



PAUL BRALOWER
Associate Broker
pbralower@pinnaclereny.com
718-371-6402



ARIEL CASTELLANOS
Associate Broker
acastellanos@pinnaclereny.com
718-371-6412