



**PINNACLE
REALTY**
OF NEW YORK, LLC

EXCLUSIVE LISTING

FOR SALE



57-14 59TH STREET


MASPETH, NY 11378

Prime Maspeth Warehouse For Sale

5,000 Sq. Ft. with Tenant in Place

TYPE

Warehouse / Industrial

| | |
|--|---|
|  SQUARE FT. 5,000 SF |  ZONING M1-1D |
|  CLEAR HEIGHT 16' |  PARCEL ID 2674 BLOCK |
|  LOADING 1 Large Drive-In |  11 LOT |

PRICE

Upon Request

718-784-8282 / PINNACLERENY.COM

All information is from sources deemed reliable and is submitted subject to errors, omission, changes of price or other conditions, prior sale, rent and withdrawal without notice.

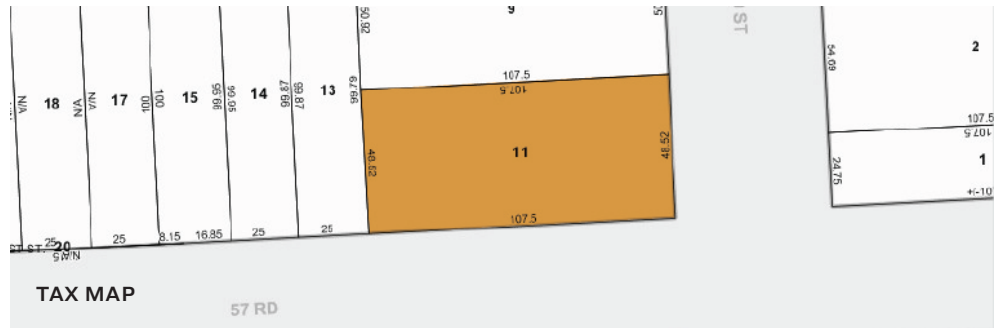
Property Overview

Features

- 5,000 Sq. Ft. Building
- 16' Ceiling Height
- Large Drive-In Door
- Small Offices
- Gas Heat
- Great Location - Access to all Boroughs

Rental Income

- 117,420 Per Year Gross with 3% Annual Increases
- 4 Years Left on Lease



TRANSPORTATION



GRAHAM AVE



6 MIN TO LONG ISLAND EXPRESSWAY

10 MIN TO BROOKLYN-QUEENS EXPY

15 MIN TO PULASKI BRIDGE

19 MIN TO QUEENSORO BRIDGE



Q59: GRAND AVE / 58TH AVE



34-07 Steinway Street, Suite 202
Long Island City, NY 11101
718-784-8282

pinnaclereny.com

FOR MORE INFORMATION ABOUT THIS PROPERTY CONTACT EXCLUSIVE AGENTS:



BRENDAN BURKE

Associate Broker
bburke@pinnaclereny.com
718-371-6403



PAUL BRALOWER

Associate Broker
pbralower@pinnaclereny.com
718-371-6402