



**PINNACLE  
REALTY**  
OF NEW YORK, LLC

EXCLUSIVE LISTING

**FOR LEASE**



**32-00 SKILLMAN AVENUE**

**LONG ISLAND CITY, NY 11101**

# **Stunning 20,000 Sq. Ft. Modern Loft Space Available for Sublease in LIC**

Divisions available at  
**5,000+ Sq. Ft. and up.**

Type  
**Flex / Loft**



SQUARE FOOT

**20,000<sub>RSF</sub>**



ZONING

**M1-4**



CLEAR HEIGHT

**14'**



PARCEL ID

**245  
BLOCK**



LOADING

**1 LOADING DOCK**



**9  
LOT**

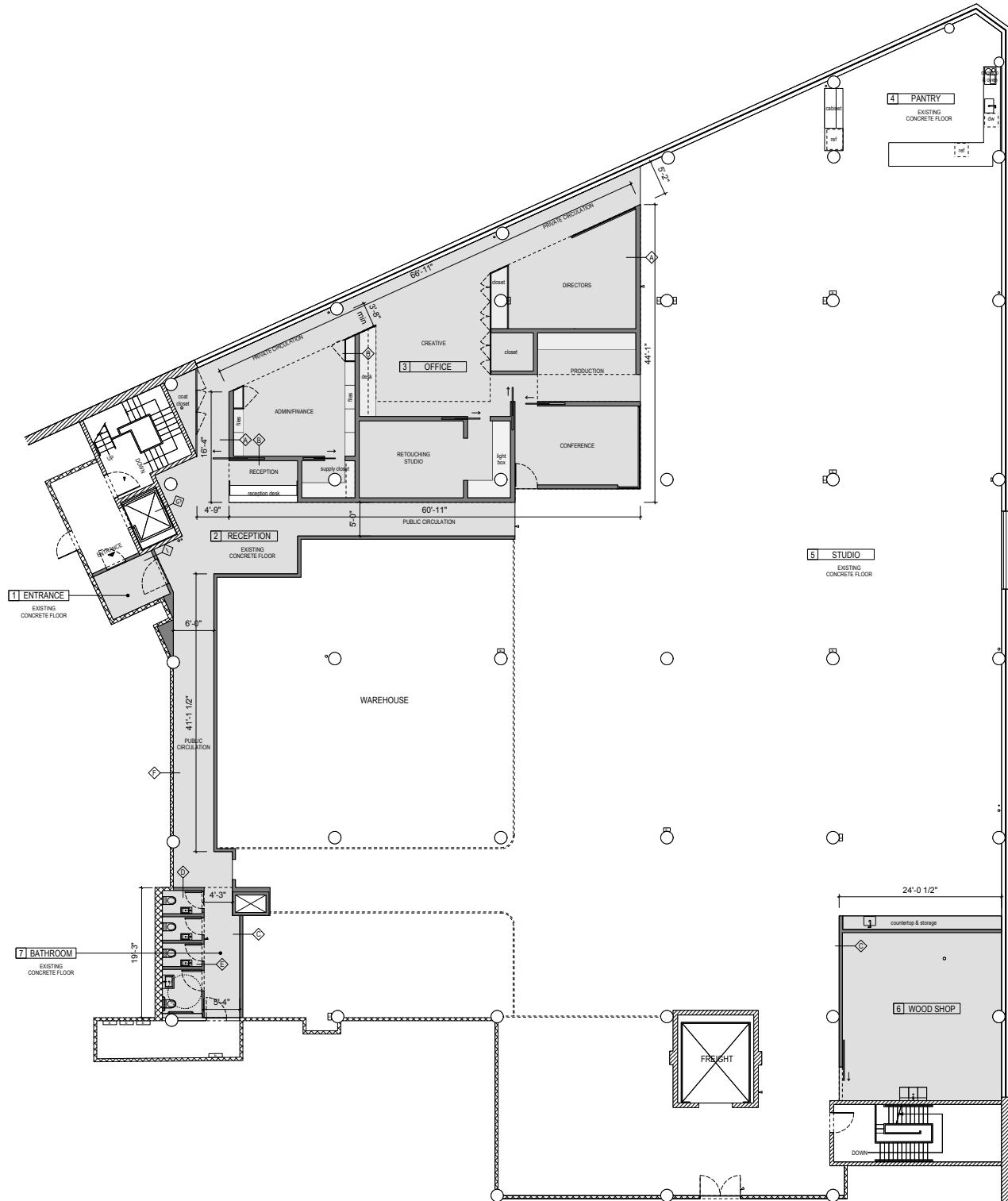
**PRICE**

**Upon Request**

**718-784-8282 / PINNACLERENY.COM**

All information is from sources deemed reliable and is submitted subject to errors, omission, changes of price or other conditions, prior sale, rent and withdrawal without notice.

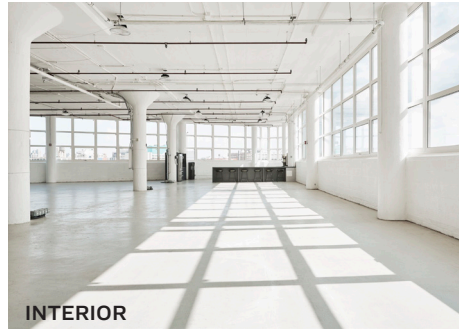
## FLOOR PLAN



# Property Overview

## Features

- 20,000 Sq. Ft. Space
- 14 Ft. Ceilings
- HVAC Throughout Entire Space
- Large Freight Elevator with Convenient Loading Dock
- Amazing Natural Light
- Fully Equipped Kitchen
- New Windows
- 4 Private Bathrooms
- Remote Monitored Security System
- Approximately 1,000 Sq. Ft. Bonus Storage Room Next to Loading Dock



INTERIOR



KITCHEN



INTERIOR



BATHROOMS



32-00 SKILLMAN AVENUE

LIC, NY 1101

## TRANSPORTATION

7

33RD STREET/  
RAWSON ST

N W

QUEENSBORO  
PLAZA



MIDTOWN  
TUNNEL

LONG ISLAND  
EXPRESSWAY

BQE



LIRR:  
HUNTERSPPOINT  
AVENUE

Q32, Q60:  
QUEENS BLVD/  
33RD STREET



34-07 Steinway Street, Suite 202  
Long Island City, NY 11101  
718-784-8282  
[pinnaclereny.com](http://pinnaclereny.com)

FOR MORE INFORMATION ABOUT THIS PROPERTY CONTACT EXCLUSIVE AGENTS:



**BRENDAN BURKE**

Associate Broker  
[bburke@pinnaclereny.com](mailto:bburke@pinnaclereny.com)  
718-371-6403



**PAUL BRALOWER**

Associate Broker  
[pbralower@pinnaclereny.com](mailto:pbralower@pinnaclereny.com)  
718-371-6402



**LOUIS FUERY**

Salesperson  
[lfuery@pinnaclereny.com](mailto:lfuery@pinnaclereny.com)  
718-371-6407