



**PINNACLE
REALTY**
OF NEW YORK, LLC

EXCLUSIVE LISTING

FOR LEASE



32-00 SKILLMAN AVENUE

LONG ISLAND CITY, NY 11101

**Stunning
20,000 Sq. Ft.
Modern Loft Space
Available in the
Heart of LIC**

Fully Renovated Available
For a 8 Year Sublease

Type
Flex / Loft



SQUARE FOOT
20,000_{RSF}



ZONING
M1-4



CLEAR HEIGHT
14'



PARCEL ID
**245
BLOCK**



LOADING
1 LOADING DOCK



**9
LOT**

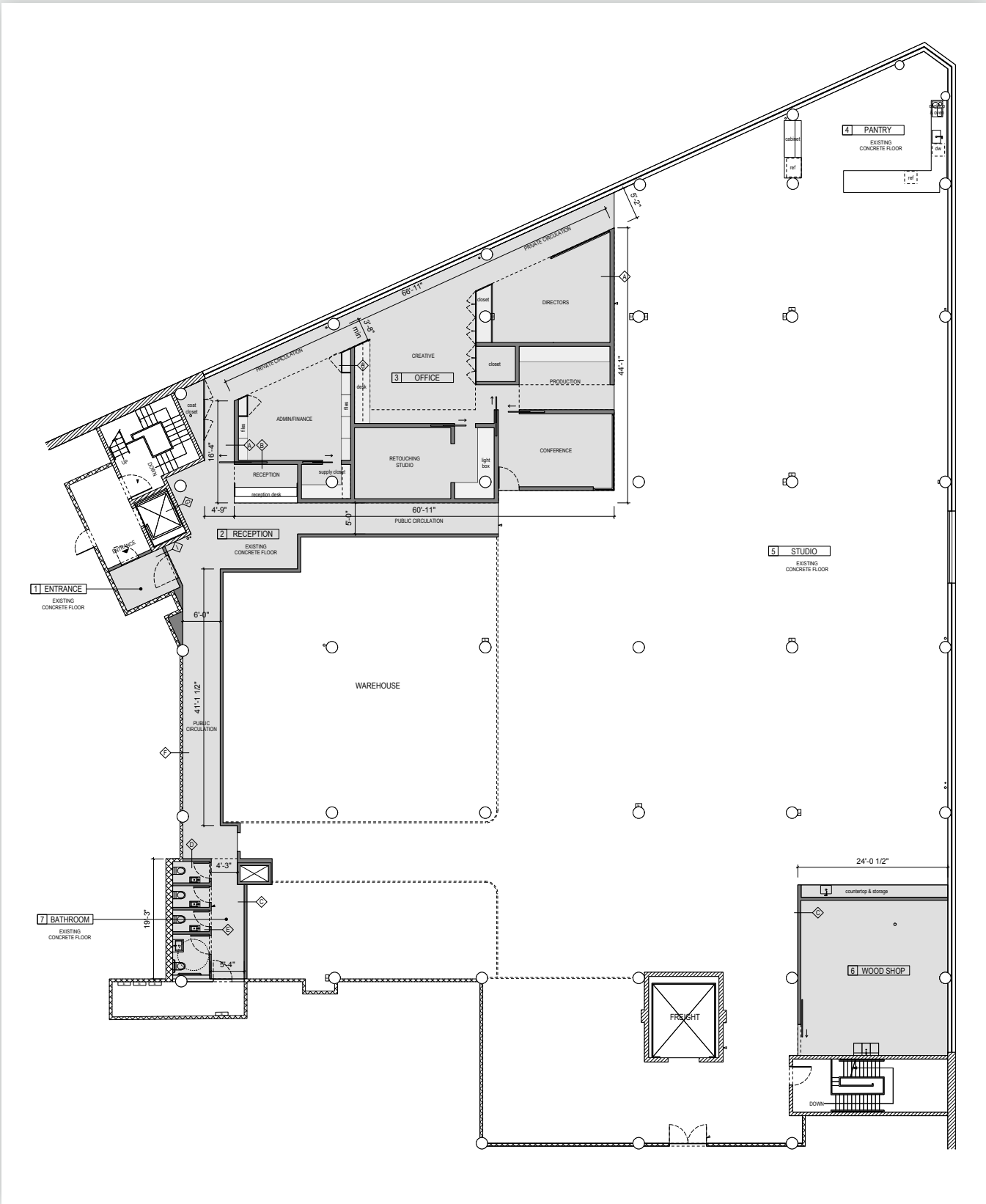
PRICE

Upon Request

718-784-8282 / PINNACLERENY.COM

All information is from sources deemed reliable and is submitted subject to errors, omission, changes of price or other conditions, prior sale, rent and withdrawal without notice.

FLOOR PLAN



Property Overview

Features

- 20,000 Sq. Ft. Space
- 14 Ft. Ceilings
- HVAC Throughout Entire Space
- Large Freight Elevator with Convenient Loading Dock
- Amazing Natural Light
- Fully Equipped Kitchen
- New Windows
- 4 Private Bathrooms
- Remote Monitored Security System



INTERIOR



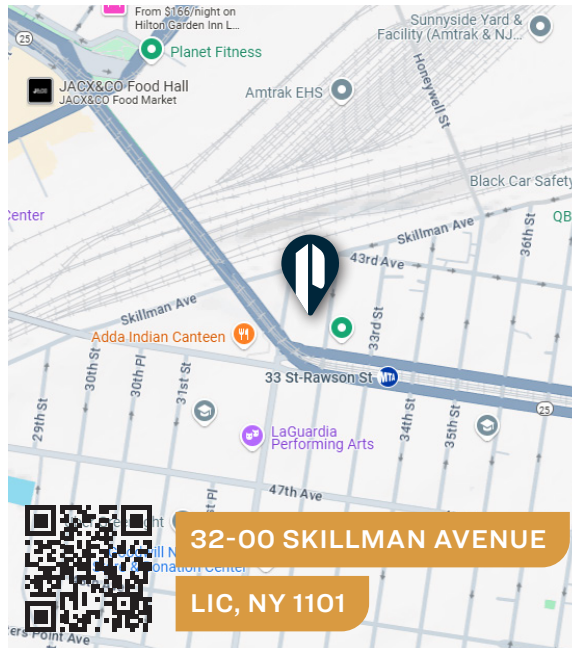
KITCHEN



INTERIOR



BATHROOMS



32-00 SKILLMAN AVENUE

LIC, NY 1101

TRANSPORTATION



33RD STREET/
RAWSON ST



QUEENSBORO
PLAZA



MIDTOWN
TUNNEL

LONG ISLAND
EXPRESSWAY

BQE



LIRR:
HUNTERSPOINT
AVENUE

Q32, Q60:
QUEENS BLVD/
33RD STREET



34-07 Steinway Street, Suite 202
Long Island City, NY 11101
718-784-8282
pinnaclereny.com

FOR MORE INFORMATION ABOUT THIS PROPERTY CONTACT EXCLUSIVE AGENTS:



BRENDAN BURKE

Associate Broker
bburke@pinnaclereny.com
718-371-6403



PAUL BRALOWER

Associate Broker
pbralower@pinnaclereny.com
718-371-6402



LOUIS FUERY

Salesperson
lfuery@pinnaclereny.com
718-371-6407