



**PINNACLE
REALTY**
OF NEW YORK, LLC

EXCLUSIVE LISTING

FOR LEASE



24-09 38TH AVENUE

LONG ISLAND CITY, NY 11101

Rare Office with Parking in Prime LIC Location

8,123 Sq. Ft. Located on
the Ground Floor

Type
Office



SQUARE FOOT

8,123_{RSF}



ZONING

M1-2



PARCEL ID

367

BLOCK



1

LOT

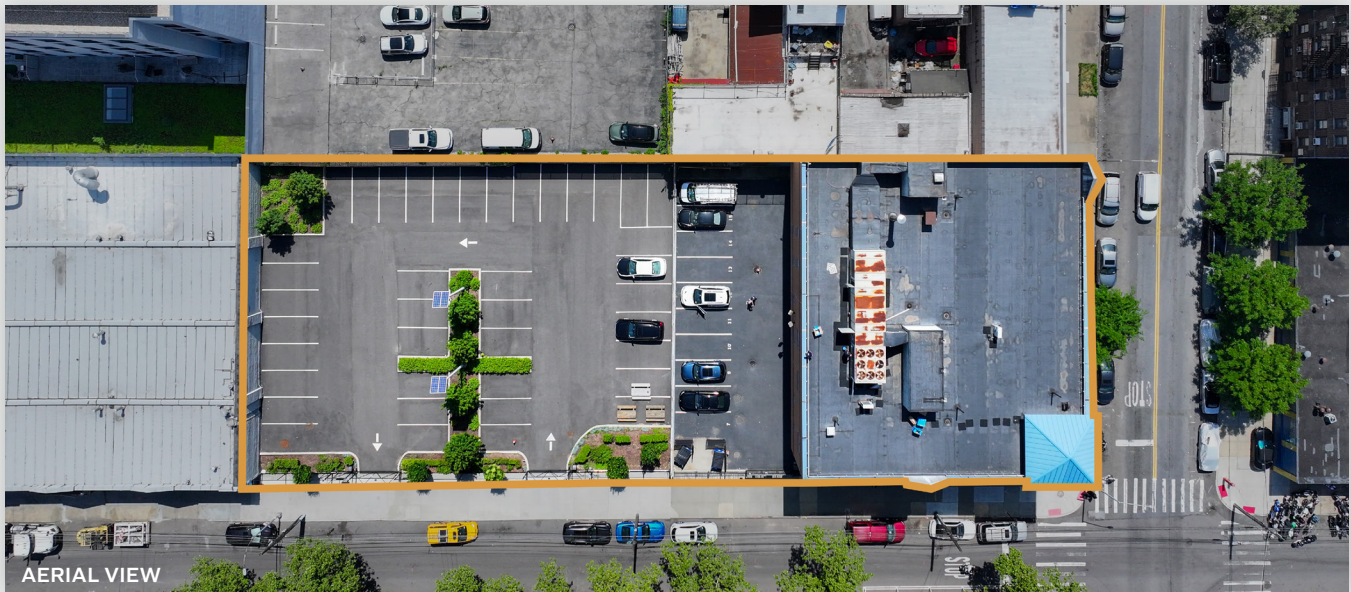
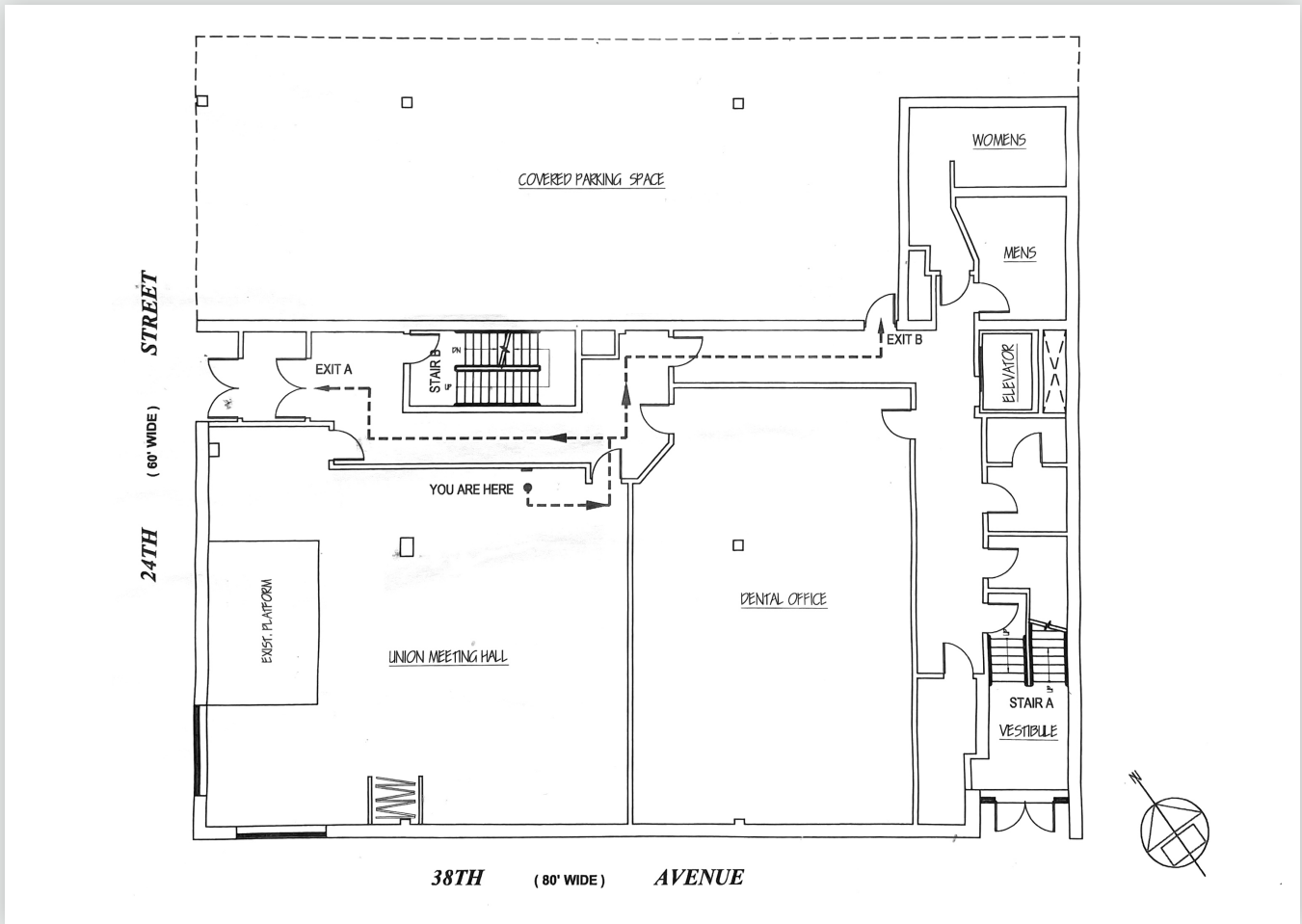
PRICE

Upon Request

718-784-8282 / PINNACLERENY.COM

All information is from sources deemed reliable and is submitted subject to errors, omission, changes of price or other conditions, prior sale, rent and withdrawal without notice.

FIRST FLOOR PLAN



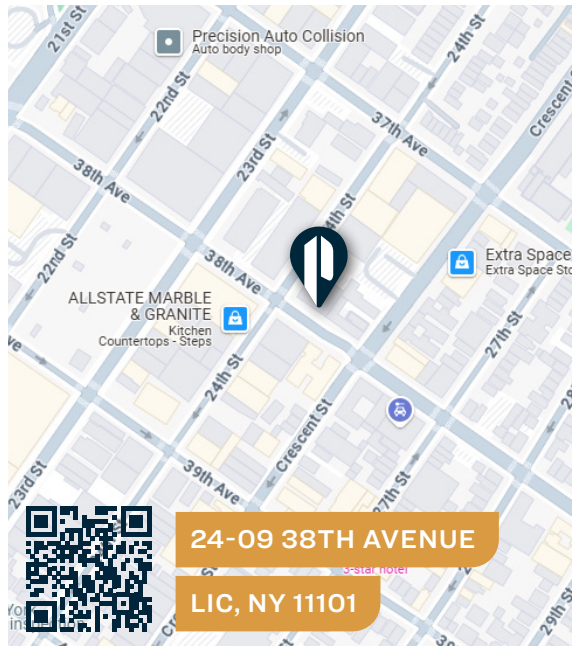
Property Overview

Features

- 8,123 Sq. Ft.
- Possible Divisions
- Off-Street Parking
- Air Conditioned
- Lobby Entrance
- Immediate Possession



INTERIOR





24-09 38TH AVENUE

LIC, NY 11101

TRANSPORTATION

- N W** 39TH AVENUE
- F** 21ST/ QUEENSBIDGE

-  QUEENSBORO BRIDGE
- NORTHERN BLVD
- QUEENS BLVD

-  **Q101: NORTHERN BLVD/39TH AVE**
- Q66: 21ST/ 37TH AVE**



34-07 Steinway Street, Suite 202
Long Island City, NY 11101
718-784-8282
pinnaclereny.com

FOR MORE INFORMATION ABOUT THIS PROPERTY CONTACT EXCLUSIVE AGENTS:



DANIEL TACK
Salesperson
dtack@pinnaclereny.com
718-371-6371



BILLY SALOMON
Salesperson
bsalomon@pinnaclereny.com
718-371-6405



TYLER FIELDS
Salesperson
tfields@pinnaclereny.com
718-371-6375