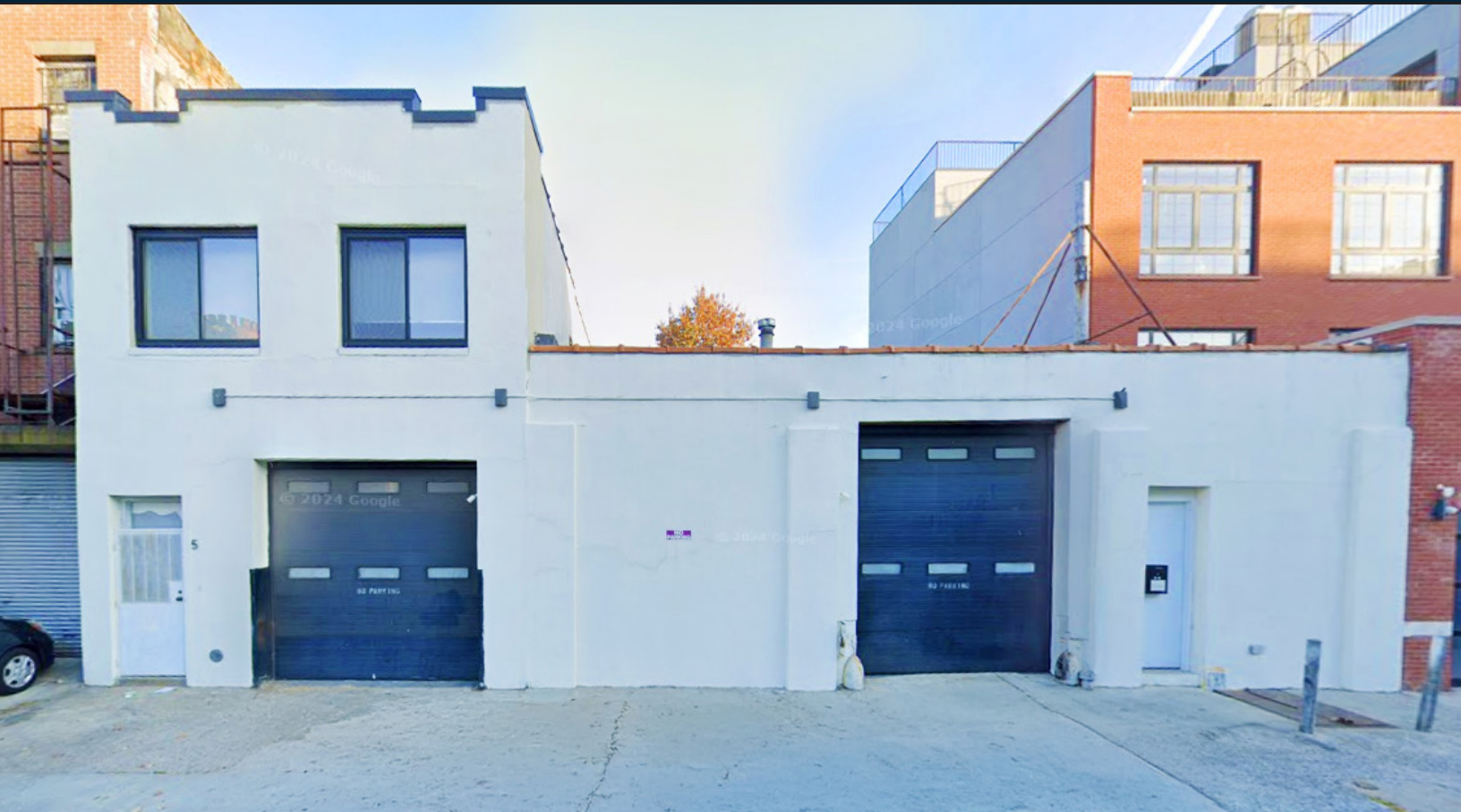




**PINNACLE
REALTY**
OF NEW YORK, LLC

EXCLUSIVE LISTING

FOR LEASE



5-9 HERKIMER PLACE

BROOKLYN, NY 11216

6,500 Sq. Ft. Turnkey Workshop/ Creative Space

Divisible to 2,650 Sq. Ft. & 3,850 Sq. Ft.

Type

Industrial / Warehouse / Flex



SQUARE FOOT

2,650 - 6,500



ZONING

M1-1



CLEAR HEIGHT

14'



PARCEL ID

1865

BLOCK



LOADING

2 DRIVE-INS



87

LOT

PRICE

Upon Request

718-784-8282 / PINNACLERENY.COM

All information is from sources deemed reliable and is submitted subject to errors, omission, changes of price or other conditions, prior sale, rent and withdrawal without notice.

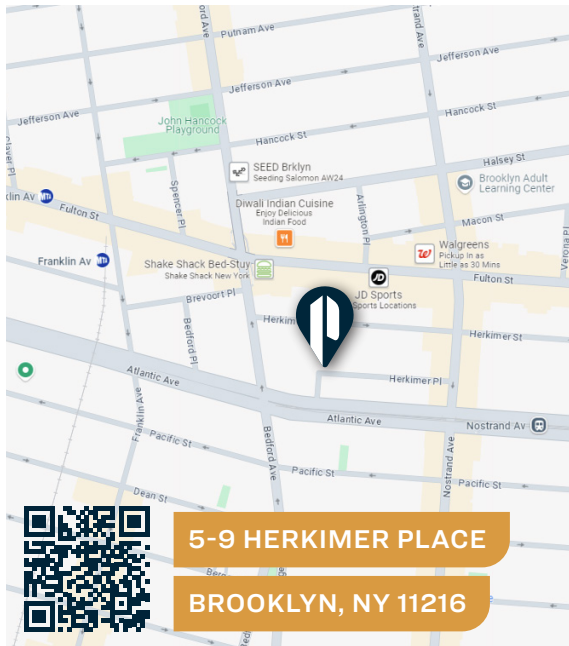
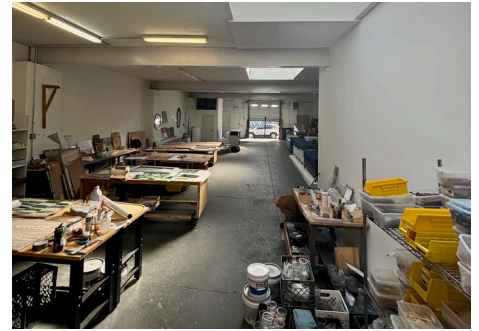
Property Overview

Features

- Total 5,600 Sq. Ft. Ground Floor Warehouse
- Unit A: 1,750 Sq. Ft.
- Unit B: 3,850 Sq. Ft.
- Take Either Unit With the 900 Sq. Ft. 2nd Floor Office
- Renovated Whitebox Space
- 3 Skylights
- Ample Natural Light
- 2 Drive-In Doors
- Private Street
- Central Location


Ideal For


- Artist
- Studio
- Office
- Workshop
- Storage
- Creative Uses
- Retail



TRANSPORTATION

A C FRANKLIN AVENUE

 ATLANTIC AVENUE

 PROSPECT PARK

MTA Bus B49: BEDFORD AVENUE/ATLANTIC AVENUE



**PINNACLE
REALTY**
OF NEW YORK, LLC

34-07 Steinway Street, Suite 202

Long Island City, NY 11101

718-784-8282

pinnaclereny.com

FOR MORE INFORMATION ABOUT THIS
PROPERTY CONTACT EXCLUSIVE AGENT:



THOMAS CHAMOUN

Salesperson

tchamoun@pinnaclereny.com

718-371-6377