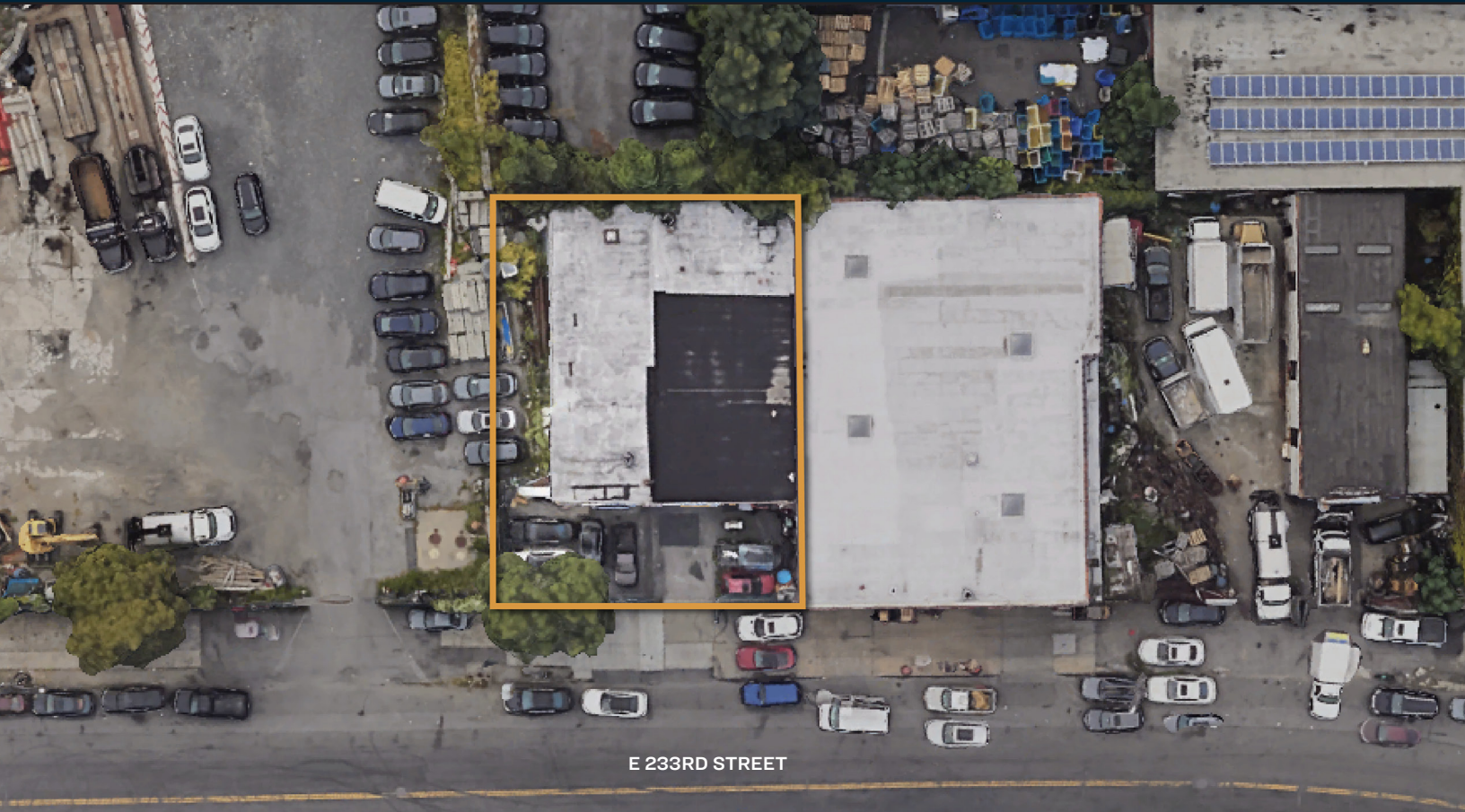




**PINNACLE
REALTY**
OF NEW YORK, LLC

EXCLUSIVE LISTING

FOR LEASE



1678 EAST 233RD STREET

BRONX, NY 10466

Former Auto Repair Facility For Lease.

4,500 Sq. Ft. Warehouse
Plus 3,000 Sq. Ft. Land.

Type

Warehouse / Industrial / Land



SQUARE FOOT

7,500_{RSF}



ZONING

M3-1



CLEAR HEIGHT

14'



PARCEL ID

4953

BLOCK



LOADING

2_{DRIVE-INS}



50

LOT

PRICE

Upon Request

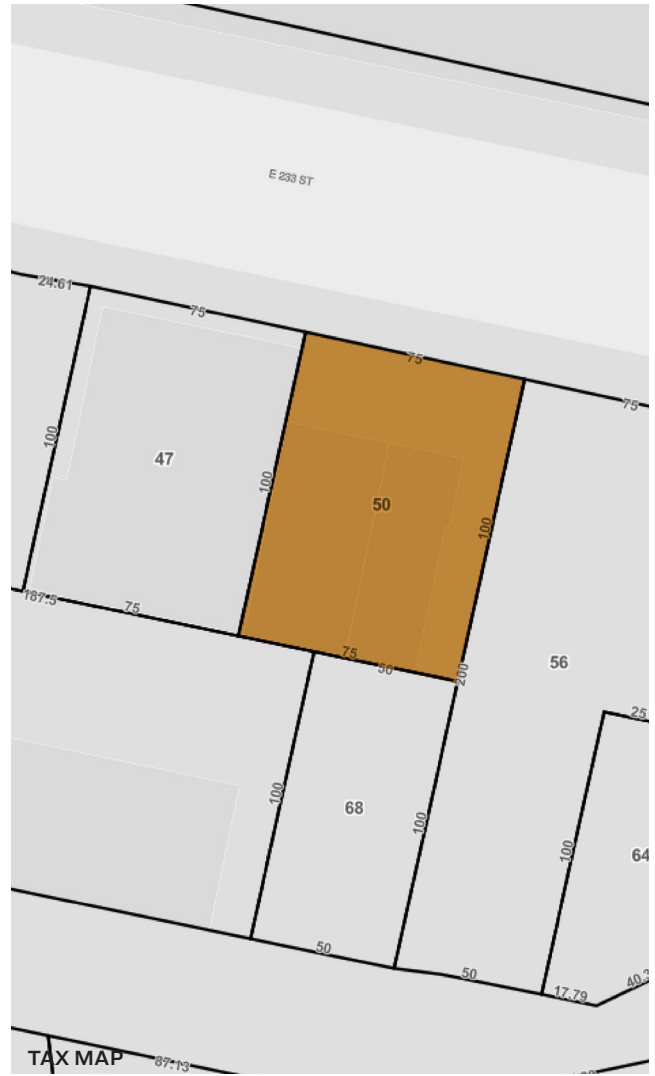
718-784-8282 / PINNACLERENY.COM

All information is from sources deemed reliable and is submitted subject to errors, omission, changes of price or other conditions, prior sale, rent and withdrawal without notice.

Property Overview

Features

- **Lot Size:** 75' x 100'
- **Warehouse:** 60' x 75'
- **Land:** 75' x 40'
- Ideal Auto or Fleet Repair Facility
- Existing Auto Repair C of O
- Prime Location in Eastchester
- Double Wide Street
- 1 Block From Boston Road
- Rare Building/Land Combination!



1678 EAST 233RD STREET

BRONX, NY 10466

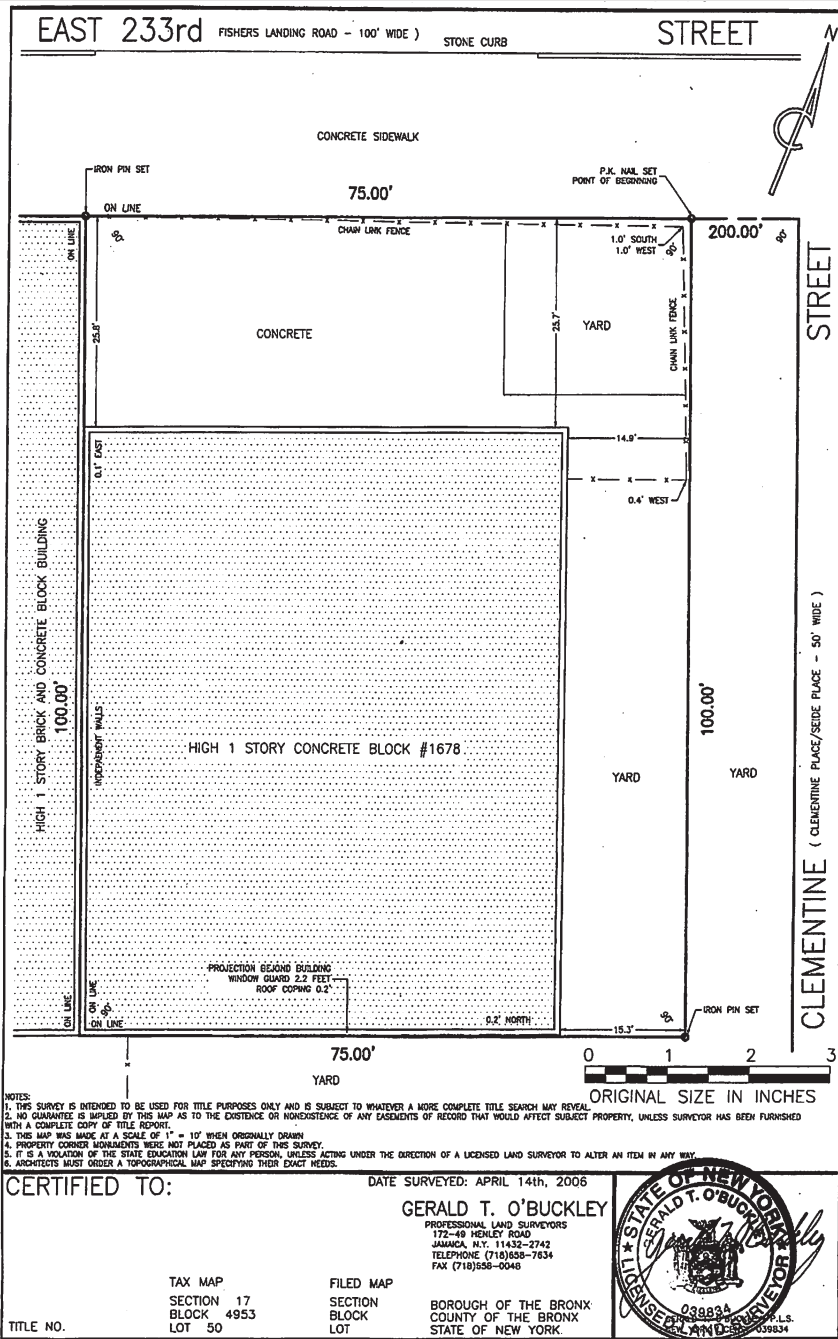
TRANSPORTATION

- 5** EASTCHESTER/
DYRE AVENUE
- BOSTON ROAD
HUTCHINSON RIV
PKWY
- MTA Bus** BX16: BOSTON RD/
CORNER STREET



718-784-8282 / PINNACLERENY.COM

All information is from sources deemed reliable and is submitted subject to errors, omission, changes of price or other conditions, prior sale, rent and withdrawal without notice.



SURVEY



34-07 Steinway Street, Suite 202
 Long Island City, NY 11101
 718-784-8282
pinnaclereny.com

FOR MORE INFORMATION ABOUT THIS
 PROPERTY CONTACT EXCLUSIVE AGENTS:



ARIEL CASTELLANOS
 Associate Broker
acastellanos@pinnaclereny.com
 718-371-6412



FEDERICO MAZZEO
 Salesperson
fmazzeo@pinnaclereny.com
 718-371-6424