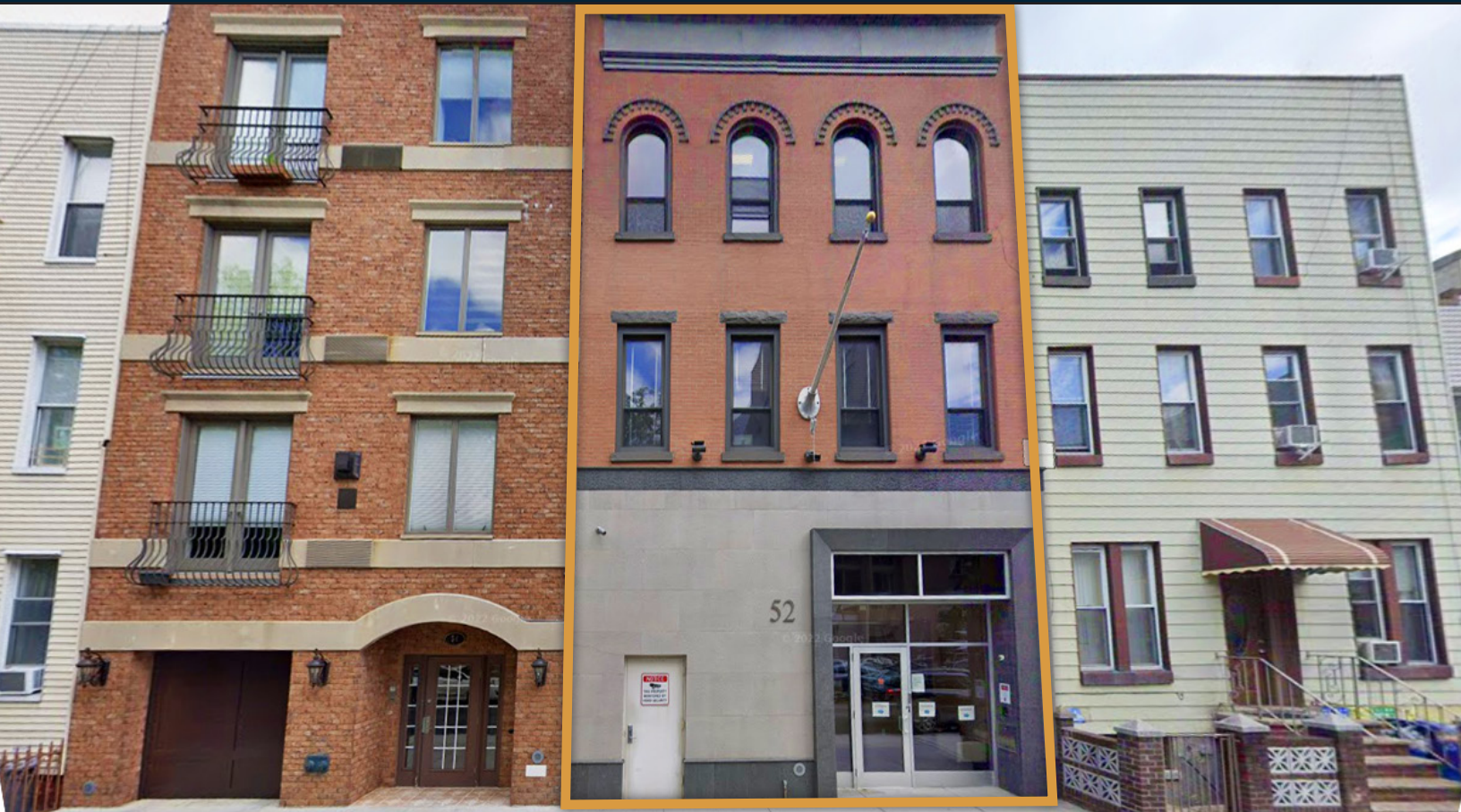




**PINNACLE
REALTY**
OF NEW YORK, LLC

EXCLUSIVE LISTING

FOR LEASE



52 DIAMOND STREET

BROOKLYN, NY 11222

Prime Greenpoint Office Space For Lease

Divisions of 1,050 Sq. Ft. & 1,450 Sq. Ft.

Type
Office



SQUARE FOOT

2,500_{RSF}



ZONING

R6-B



CLEAR HEIGHT

10'



PARCEL ID

2685

BLOCK



63

LOT

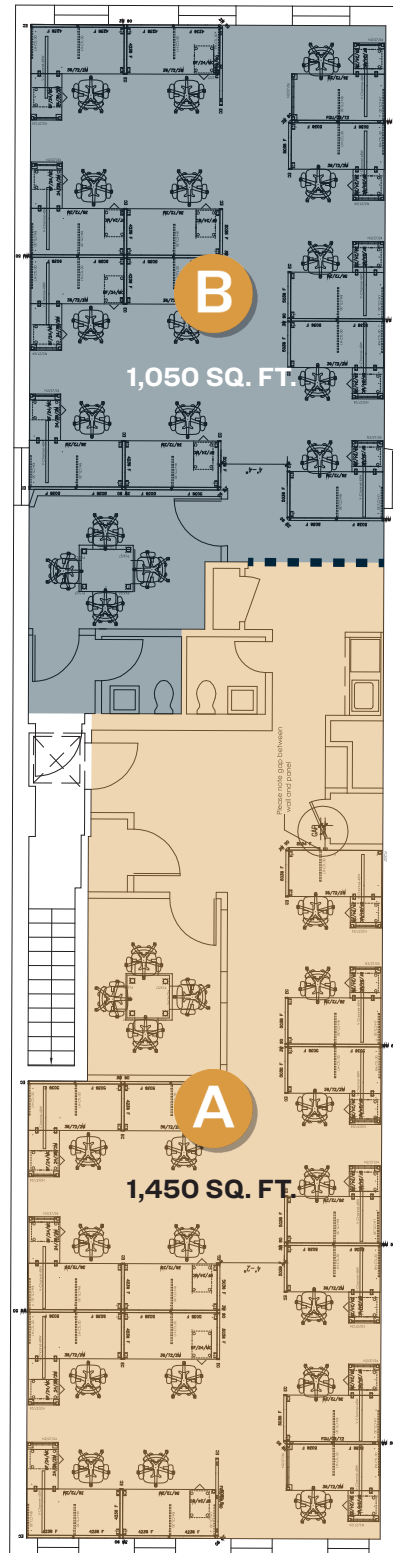
PRICE

Upon Request

718-784-8282 / PINNACLERENY.COM

All information is from sources deemed reliable and is submitted subject to errors, omission, changes of price or other conditions, prior sale, rent and withdrawal without notice.

FLOOR PLAN



Property Overview

Features

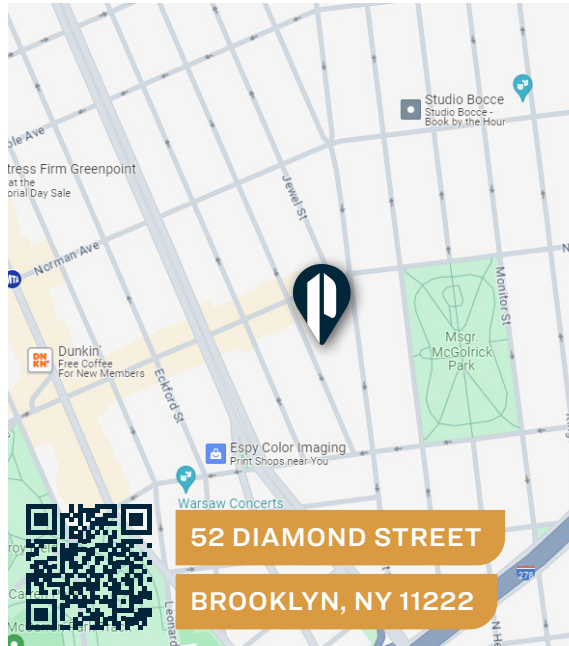
- 2,500 Sq. Ft. Office Space
- Tastefully Finished 3rd Floor Space
- Natural Light
- Walking Distance to Restaurants and Cafes
- Can Come Fully Furnished
- Available Immediately

Space A

- 1,450 Sq. Ft.
- Conference Room
- Bathroom
- Kitchenette

Space B

- 1,050 Sq. Ft.
- Conference Room
- Bathroom
- Potential for Kitchenette



TRANSPORTATION



NASSAU AVE



BROOKLYN
QUEENS EXPY

QUEENS
MIDTOWN EXPY

PULASKI BRIDGE



B48: NASSAU AVE/
HUMBOLDT ST



34-07 Steinway Street, Suite 202
Long Island City, NY 11101
718-784-8282
pinnaclereny.com

FOR MORE INFORMATION ABOUT THIS
PROPERTY CONTACT EXCLUSIVE AGENTS:



MARK CASO

Salesperson
mcaso@pinnaclereny.com
718-371-6419



PAUL BRALOWER

Associate Broker
pbralower@pinnaclereny.com
718-371-6402