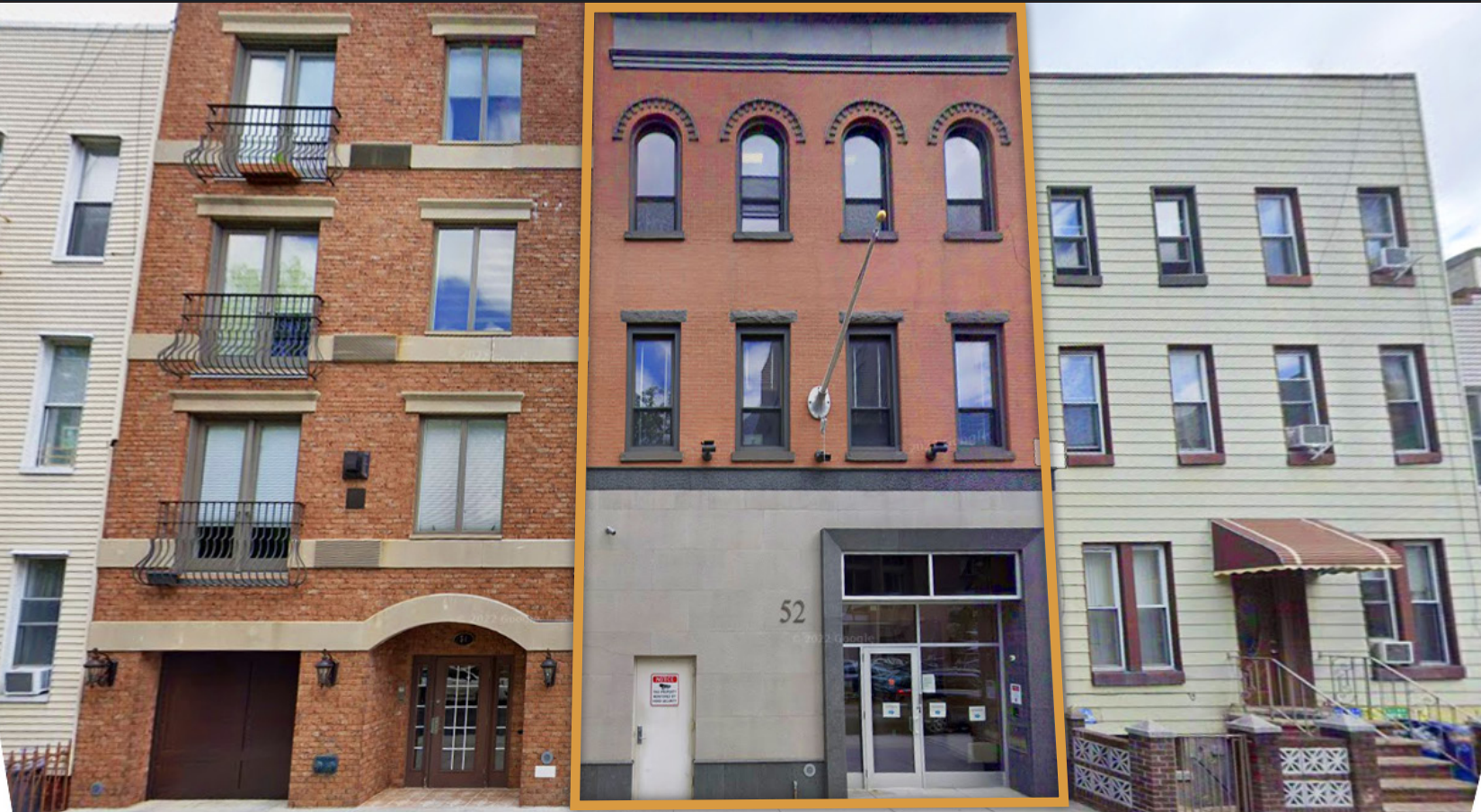




**PINNACLE  
REALTY**  
OF NEW YORK, LLC

EXCLUSIVE LISTING

**FOR LEASE**



**52 DIAMOND STREET**

**BROOKLYN, NY 11222**

# Prime Finished Office Space For Lease

in Greenpoint.

Type  
**Office**



SQUARE FOOT

**2,500<sub>RSF</sub>**



ZONING

**R6-B**



CLEAR HEIGHT

**10'**

PARCEL ID



**2685**

BLOCK



LOADING

**Passenger  
Elevator**



**63**

LOT

PRICE

**Upon Request**

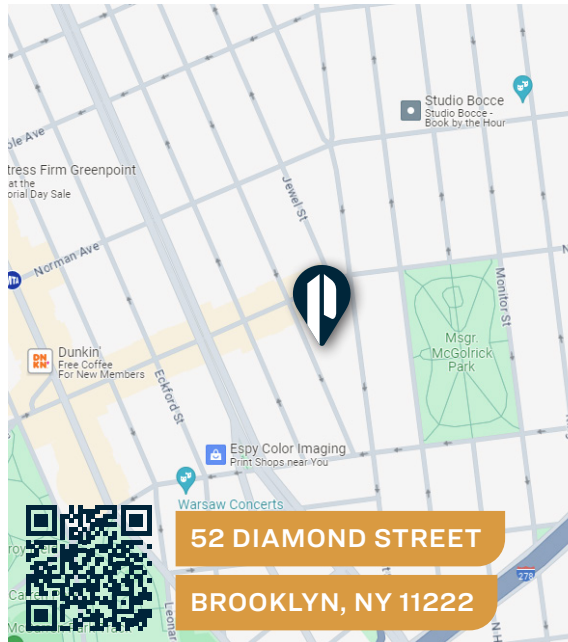
718-784-8282 / PINNACLERENY.COM

All information is from sources deemed reliable and is submitted subject to errors, omission, changes of price or other conditions, prior sale, rent and withdrawal without notice.

# Property Overview

## Features

- 2,500 Sq. Ft. Office Space
- Tastefully Finished 3rd Floor Space
- Natural Light
- Walking Distance to Restaurants and Cafes
- Can Come Fully Furnished
- Available Immediately



## TRANSPORTATION



NASSAU AVE



BROOKLYN  
QUEENS EXPY

QUEENS  
MIDTOWN EXPY

PULASKI BRIDGE



B48: NASSAU AVE/  
HUMBOLDT ST



34-07 Steinway Street, Suite 202  
Long Island City, NY 11101  
718-784-8282

[pinnaclereny.com](http://pinnaclereny.com)

FOR MORE INFORMATION ABOUT THIS  
PROPERTY CONTACT EXCLUSIVE AGENTS:



**MARK CASO**

Salesperson  
[mcaso@pinnaclereny.com](mailto:mcaso@pinnaclereny.com)  
718-371-6419



**PAUL BRALOWER**

Associate Broker  
[pbralower@pinnaclereny.com](mailto:pbralower@pinnaclereny.com)  
718-371-6402