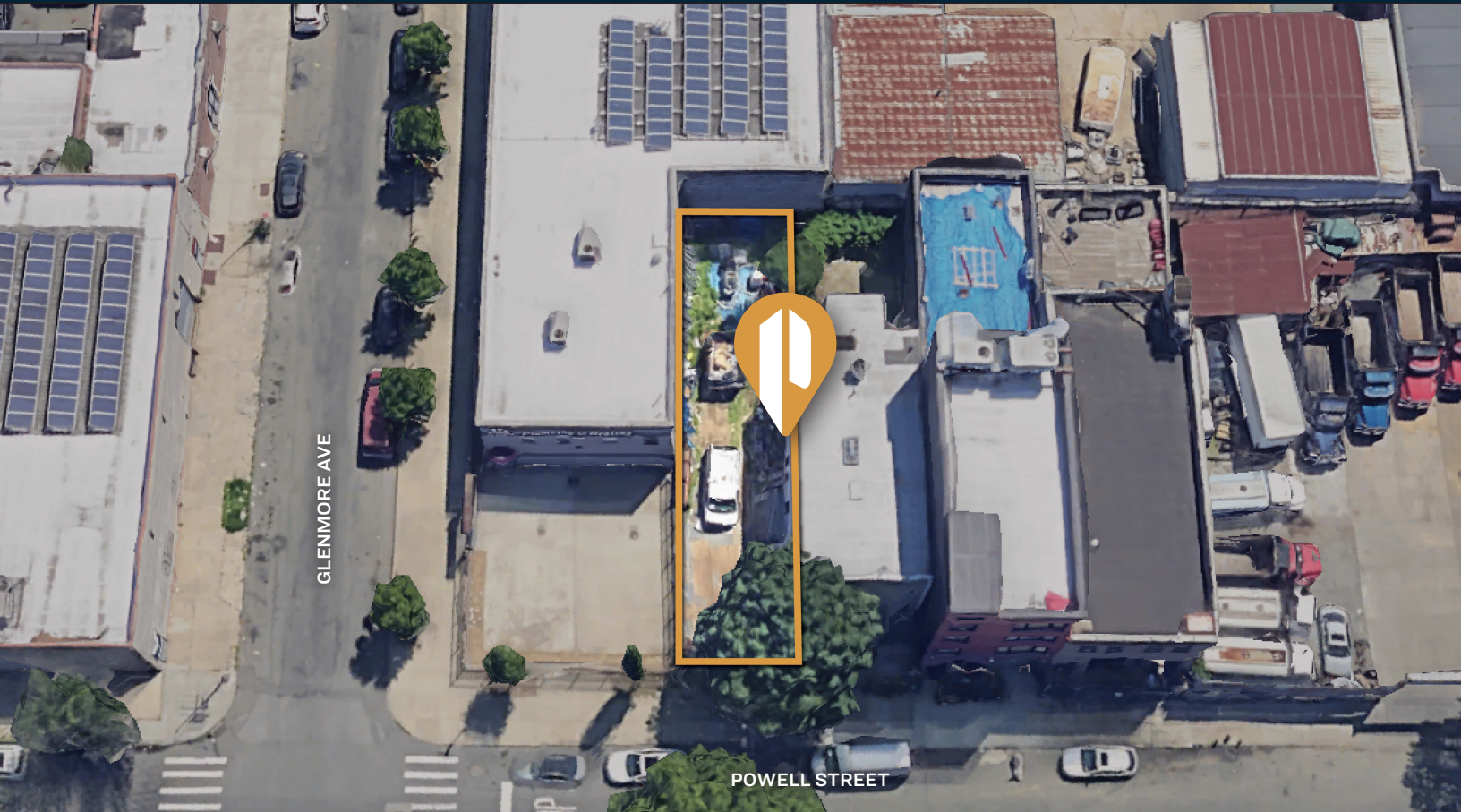




**PINNACLE
REALTY**
OF NEW YORK, LLC

EXCLUSIVE LISTING

FOR SALE



121 POWELL STREET

BROOKLYN, NY 11212

Industrial Yard For Sale in Brooklyn

2,350 Sq. Ft.

Type
Yard



SQUARE FOOT

2,350_{RSF}



ZONING

M1-4



LOADING

1 DRIVE-IN GATE



PARCEL ID

3712

BLOCK



17

LOT

PRICE

Upon Request

718-784-8282 / PINNACLERENY.COM

All information is from sources deemed reliable and is submitted subject to errors, omission, changes of price or other conditions, prior sale, rent and withdrawal without notice.

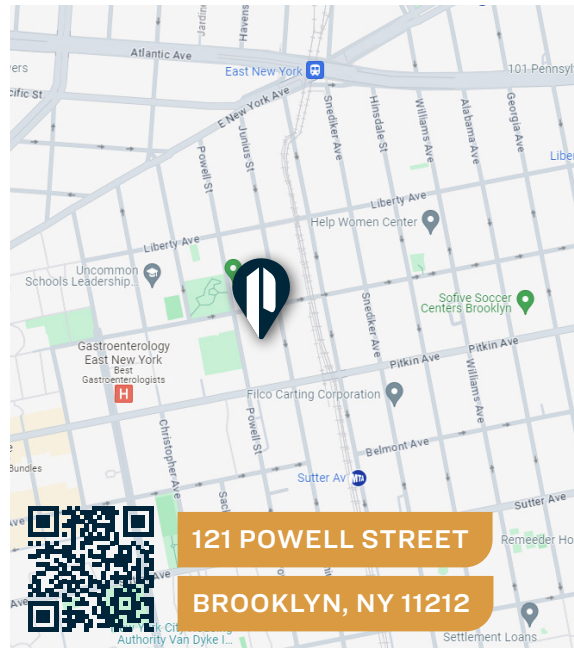
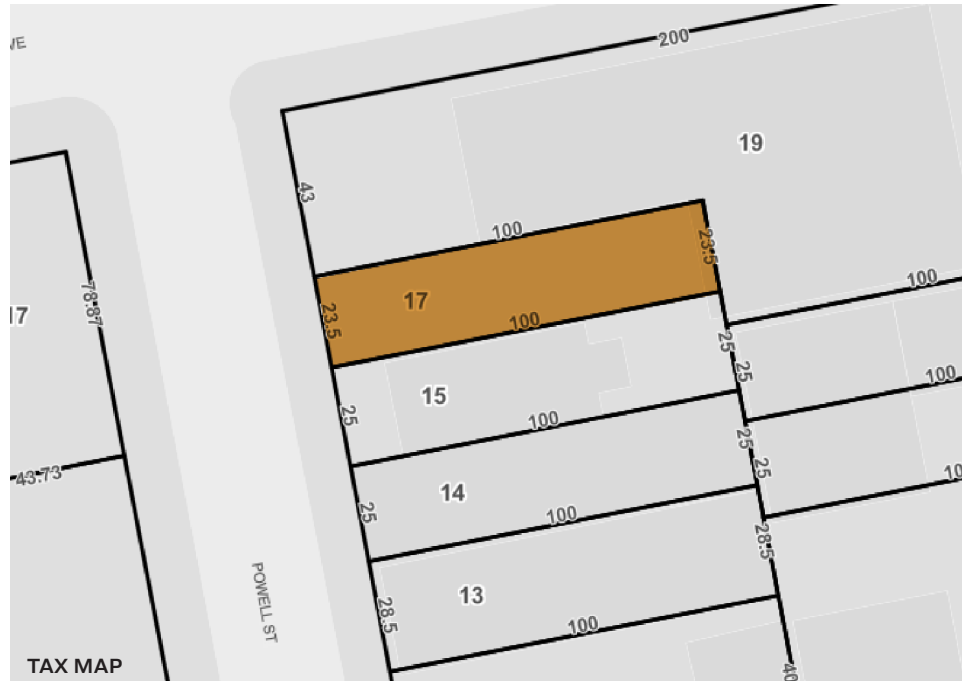
Property Overview

Features

- 2,350 Sq. Ft. Industrial Yard
- Available For Immediate Sale
- Drive-in Gate

Ideal For

- Contractor Storage
- Truck/Van Parking
- Landscaping Storage




TRANSPORTATION

L SUTTER AVENUE

A C LIBERTY AVENUE

 ATLANTIC AVENUE
JACKIE ROBINSON PKWY
LINDEN BLVD

 **B12: EAST NEW YORK/JUNIUS STREET**
B14: PITKIN AVE/MOTHER GASTON BLVD



**PINNACLE
REALTY**

OF NEW YORK, LLC

34-07 Steinway Street, Suite 202

Long Island City, NY 11101

718-784-8282

pinnaclereny.com

FOR MORE INFORMATION ABOUT THIS
PROPERTY CONTACT EXCLUSIVE AGENT:



MARK CASO

Salesperson

mcao@pinnaclereny.com

718-371-6419