



**PINNACLE
REALTY**
OF NEW YORK, LLC

EXCLUSIVE LISTING

FOR LEASE



666 MORGAN AVENUE







BROOKLYN, NY 11222

3,000 Sq. Ft. Warehouse with Offices For Lease.

Prime Greenpoint Location.

TYPE

Warehouse / Industrial

 SQUARE FT. 3,000 RSF	 ZONING M3-1
 CLEAR HEIGHT 17'	 PARCEL ID 2660 BLOCK
 LOADING 1 Drive-in Door	 1 LOT

PRICE

Upon Request

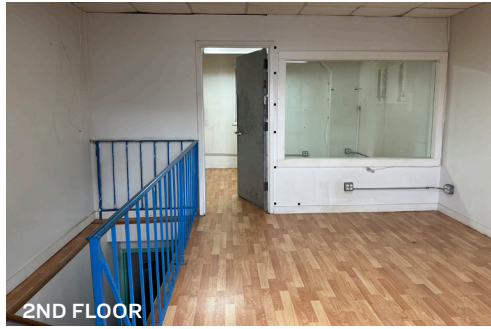
718-784-8282 / PINNACLERENY.COM

All information is from sources deemed reliable and is submitted subject to errors, omission, changes of price or other conditions, prior sale, rent and withdrawal without notice.

Property Overview

FEATURES

- 3,000 Sq. Ft.
- 2,400 Sq. Ft. 1st Floor Warehouse
- 2nd Floor Walk-Up Office
- 1 Large Drive-In Door
- 17 Ft. Ceiling Height
- Available Immediately



2ND FLOOR



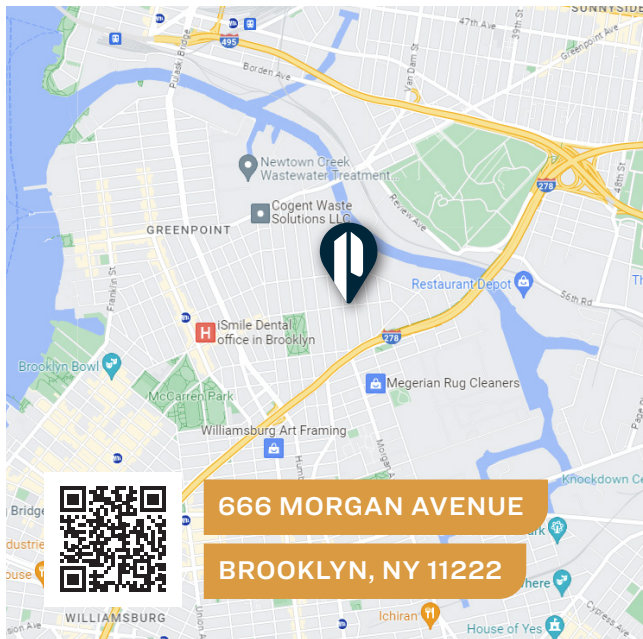
DRIVE-IN DOOR



INTERIOR



EXTERIOR



TRANSPORTATION



NASSAU AVENUE



BROOKLYN
QUEENS EXPY

MIDTOWN
TUNNEL

WILLIAMSBURG
BRIDGE



B48: NASSAU AVE
/MORGAN STREET



**PINNACLE
REALTY**
OF NEW YORK, LLC

34-07 Steinway Street, Suite 202
Long Island City, NY 11101
718-784-8282

pinnaclereny.com

FOR MORE INFORMATION ABOUT THIS PROPERTY CONTACT EXCLUSIVE AGENTS:



PAUL BRALOWER

Associate Broker
pbralower@pinnaclereny.com
718-371-6402



LOUIS FUERY

Salesperson
lfuery@pinnaclereny.com
718-371-6407



BILLY SALOMON

Salesperson
bsalomon@pinnaclereny.com
718-371-6405