



**PINNACLE  
REALTY**  
OF NEW YORK, LLC

EXCLUSIVE LISTING

FOR LEASE



1662-1670 ST. NICHOLAS AVE.







NEW YORK, NY 10040

# High Visibility One of a Kind Retail / Office

4,000 Sq. Ft. Ground Floor

**TYPE**

Warehouse / Retail / Industrial / Office

 <b>SQUARE FT.</b> <b>3,880</b> RSF	 <b>ZONING</b> <b>R7-2, C1-4</b>
 <b>CLEAR HEIGHT</b> <b>12' - 14'</b>	 <b>PARCEL ID</b> <b>2149</b> BLOCK
 <b>LOADING</b> Street	 <b>276</b> LOT

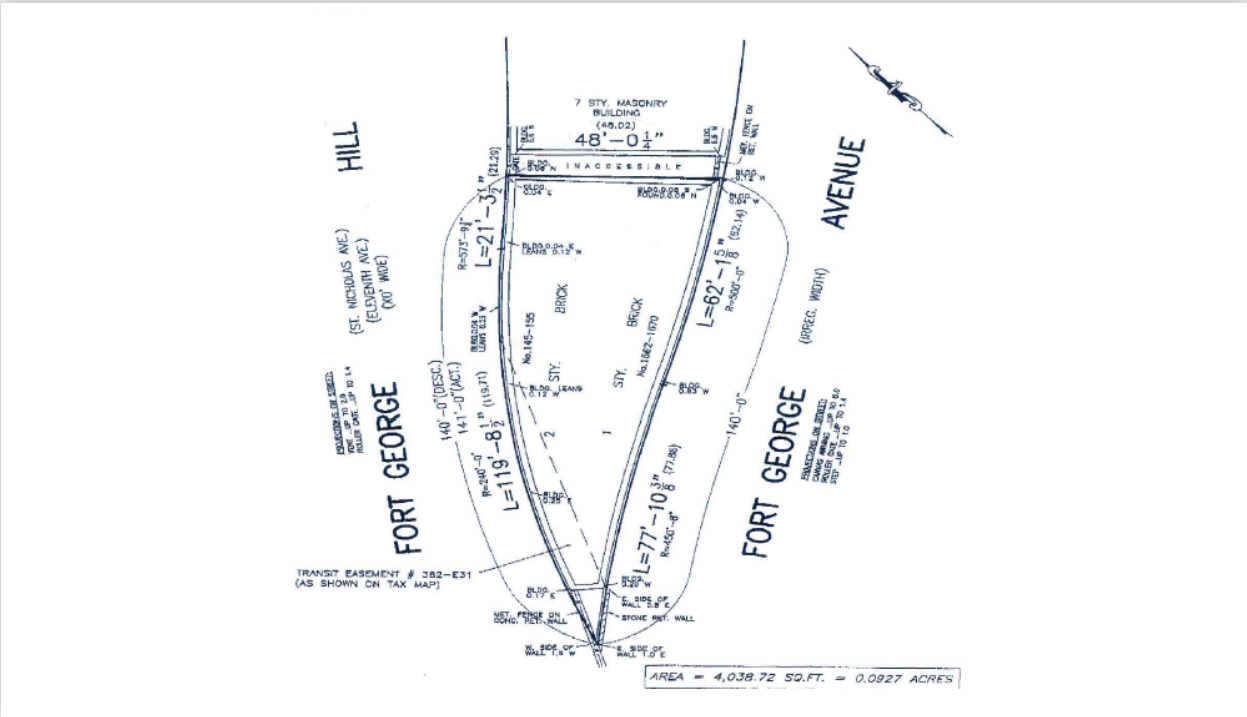
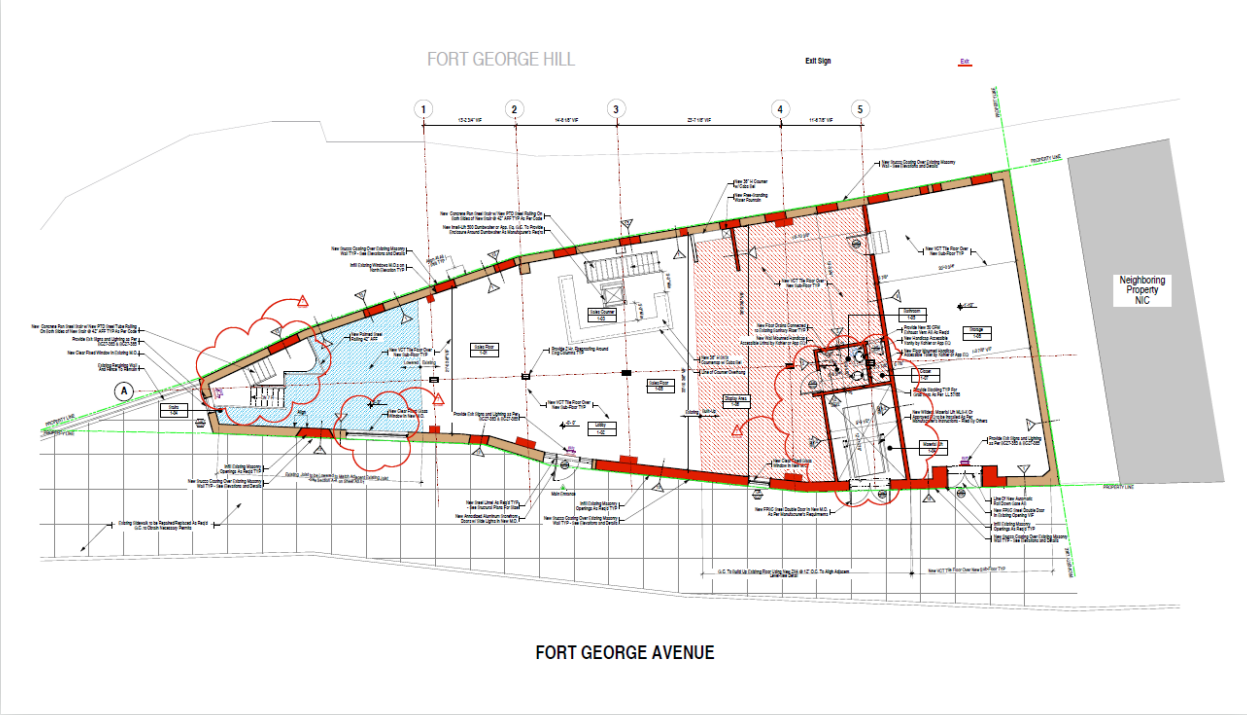
**PRICE**

Upon Request

718-784-8282 / PINNACLERENY.COM

All information is from sources deemed reliable and is submitted subject to errors, omission, changes of price or other conditions, prior sale, rent and withdrawal without notice.

# FIRST FLOOR PLAN

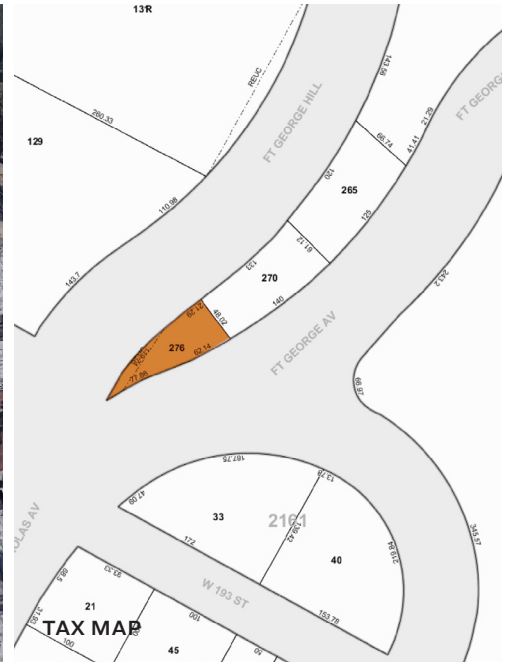




# Property Overview

## FEATURES

- 4,000 Sq. Ft. Ground Floor Fully Finished Store



## TRANSPORTATION



PROSPECT AVE



HARLEM RIVER DRIVE

BROADWAY

GEORGE WASHINGTON BRIDGE

HENRY HUDSON PARKWAY



M3: ST NICHOLAS AVE/FORT GEORGE HILL

1662-1670 ST. NICHOLAS AVE.

NEW YORK, NY 10040



34-07 Steinway Street, Suite 202

Long Island City, NY 11101

718-784-8282

[pinnaclereny.com](http://pinnaclereny.com)

FOR MORE INFORMATION ABOUT THIS PROPERTY CONTACT EXCLUSIVE AGENTS:



**FREDRIC STEIN**

Associate Broker

[fstein@pinnaclereny.com](mailto:fstein@pinnaclereny.com)

718-371-6409



**FEDERICO MAZZEO**

Salesperson

[fmazzeo@pinnaclereny.com](mailto:fmazzeo@pinnaclereny.com)

718-371-6424