



**PINNACLE
REALTY**
OF NEW YORK, LLC

EXCLUSIVE LISTING

FOR LEASE



53-01 METROPOLITAN AVENUE

RIDGEWOOD, NY 11385

Land For Lease in Maspeth

8,400 Sq. Ft.

Type
Land



SQUARE FOOT

8,400_{RSF}



ZONING

**R4/C2-4/
R6B**

PARCEL ID



2634

BLOCK



15

LOT

PRICE

Upon Request

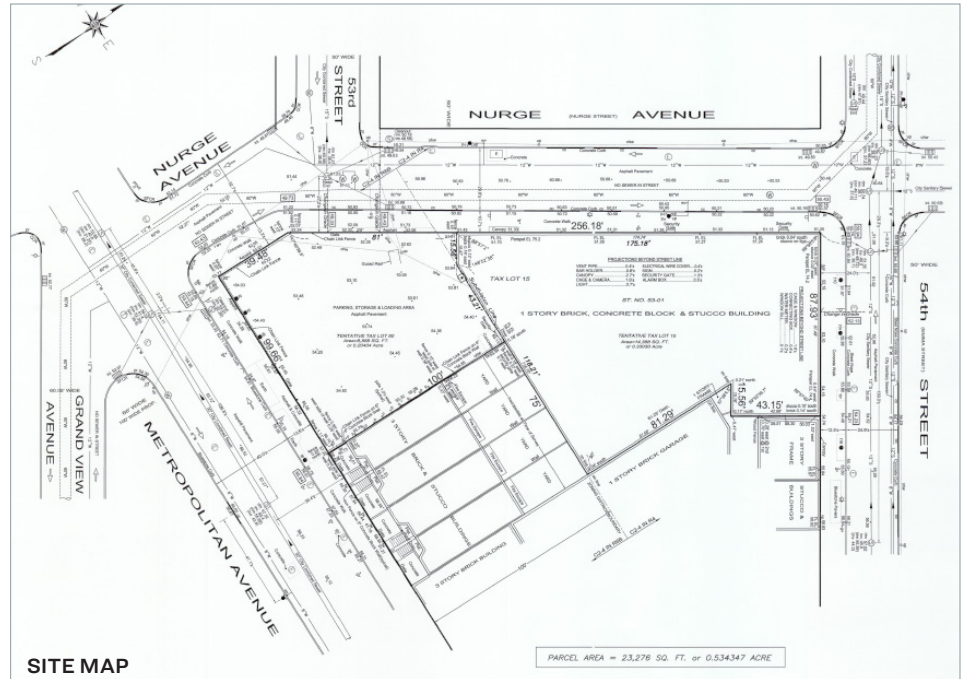
718-784-8282 / PINNACLERENY.COM

All information is from sources deemed reliable and is submitted subject to errors, omission, changes of price or other conditions, prior sale, rent and withdrawal without notice.

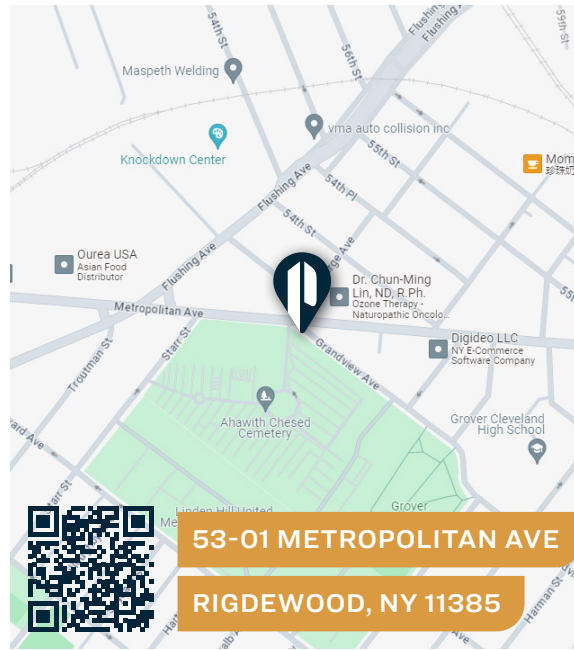
Property Overview

Features

- 8,400 Sq. Ft. Corner Lot
- Fenced
- Electricity is Available
- 1 Curb Cut on Nurge Avenue
- Frontage on Metropolitan Avenue



SITE MAP



TRANSPORTATION



MIDDLE VILLAGE - METROPOLITAN AVENUE



FLUSHING AVENUE / GRAND AVENUE

QUEENS MIDTOWN EXPRESSWAY

BROOKLYN-QUEENS EXPRESSWAY



Q54: METROPOLITAN AVE / NURGE AVE



34-07 Steinway Street, Suite 202
Long Island City, NY 11101
718-784-8282
pinnaclereny.com

FOR MORE INFORMATION ABOUT THIS PROPERTY CONTACT EXCLUSIVE AGENTS:



PAUL BRALOWER
Associate Broker
pbralower@pinnaclereny.com
718-371-6402



BRENDAN BURKE
Associate Broker
bburke@pinnaclereny.com
718-371-6403



JOHNNY ZOU
Salesperson
jzou@pinnaclereny.com
718-371-6399